

# MULTIPLE MOTION DOOR SYSTEM (FOR WOOD PANELS)

INSTRUCTION

VIDEO



Door position can be changed freely like a puzzle.

- Opened doors can slide and close at any unoccupied position.
- All doors will be flush with others when in closed position.
- By adding more doors, the more opening patterns will be possible.
- Multiple doors can be added by connecting multiple sliding units. Odd number of doors can also be arranged.
- Hardware requires only 80 mm of depth. Ideal for shallow cabinets.
- Glass door version also available. Refer to [1](#) for details.



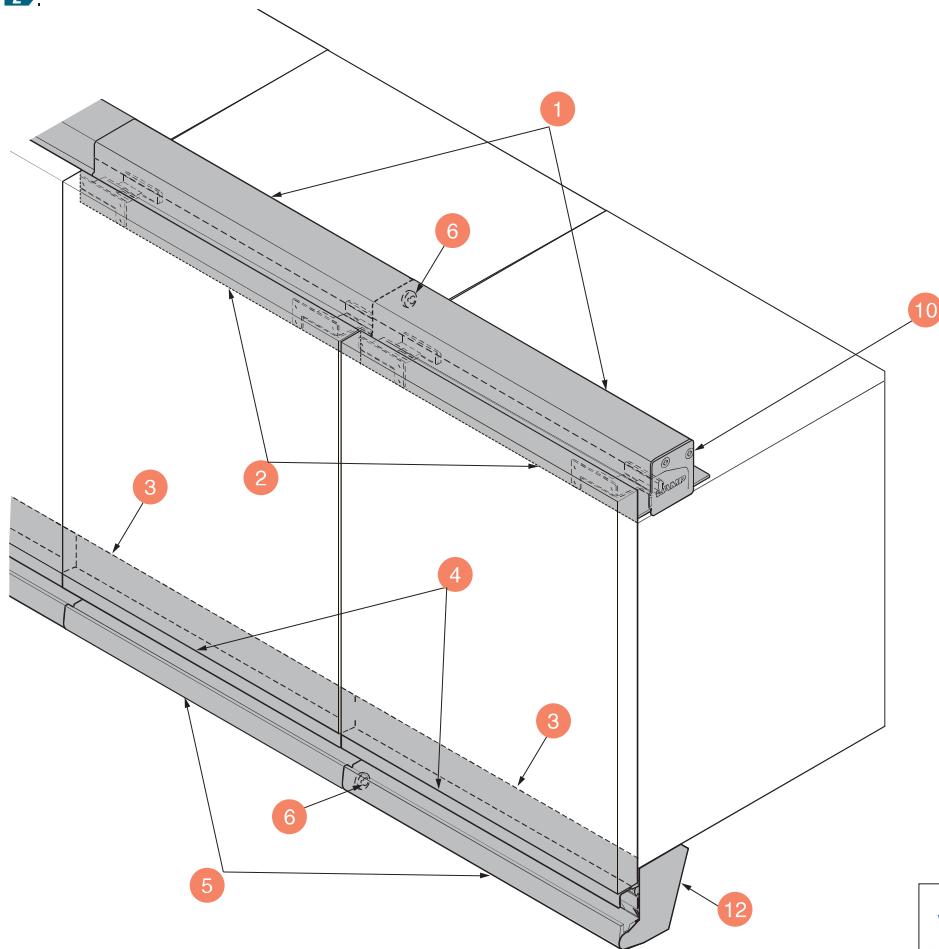
Door Width	297 mm, 447 mm, 597 mm, 897 mm
Door Height	300~900 mm
Door Thickness	15~23 mm
Door Weight	1.5~6.8 kg/Door ※
Specification	<input type="checkbox"/> Connecting Multiple Sliding Units (Overlay)

※ Including mounting parts

### [Remarks]

- Recommend using 3 or more doors for interchangeable door.
- Maximum door height is twice of door width.
- 2 or more doors of the same size are necessary for interchange. Order at least 2 identical parts sets.
- Cannot be used together with glass door version on one cabinet.
- 1 end cap set is necessary for 1 unit.

The circled numbers are part numbers.  
Please check with the part list [2](#).

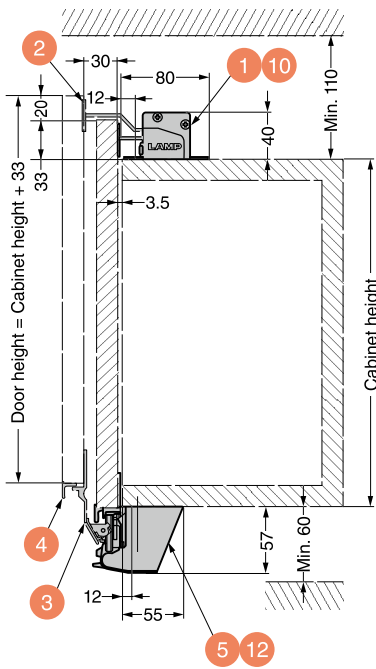


Video Link



Refer to [1](#) : P.354. [2](#) : P.352~353

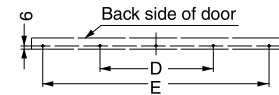
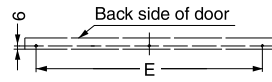
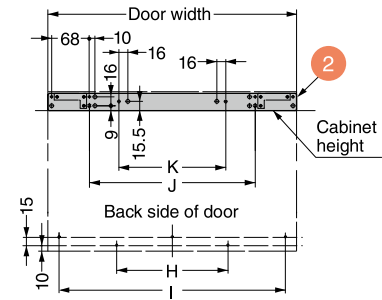
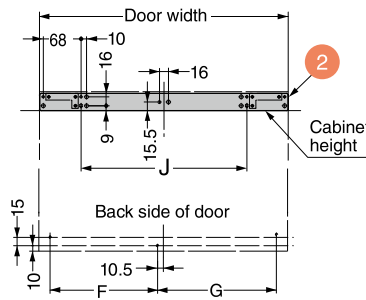
**[Installation Example]** The circled numbers are part numbers. Please check with the part list **1**.



**[Mounting Application for Door Brackets 2, Door Sliding Profile 3, Door Handle 4]**

● Door width 297 mm, 447 mm

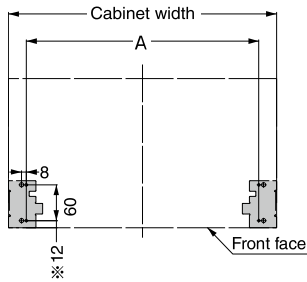
● Door width 597 mm, 897 mm



Door Width	D	E	F	G	H	I	J	K
297	-	257	118	139	-	-	148	-
447	-	407	193	214	-	-	298	-
597	278.5	557	-	-	300	557	448	200
897	428.5	857	-	-	400	857	748	300

**[Mounting Application for Upper Rail 1]**

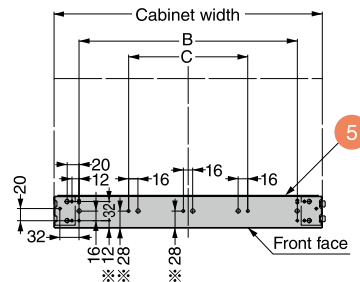
● Outside of top panel



Cabinet width	A
300	240
450	390
600	540
900	840

**[Mounting Application for Lower Rail 5]**

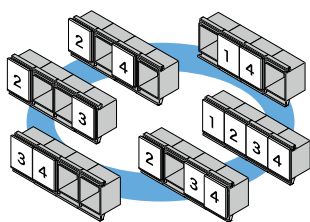
● Outside of bottom panel



Cabinet width	B	C
300	216	-
450	366	-
600	516	200
900	816	300

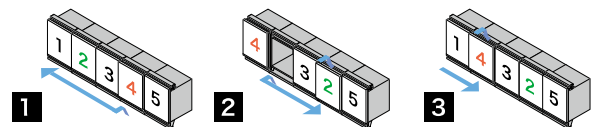
※ When using gasket thicker than 3 mm, subtract [gasket thickness - 3 mm] from the marked dimensions.

**Door opening example (4 doors)**



Doors can slide at any unoccupied position. By adding more doors, the more opening patterns will be possible.

**Interchangeable door position (3 doors or more)**



1 Pull out the door 4 and slide it laterally.

2 Pull out the door 2, slide it to the original position of the door 4, and then close it.

3 Slide the door 4 to the original position of the door 2 and close it, to complete door interchange.

Refer to **1** : P.352-353