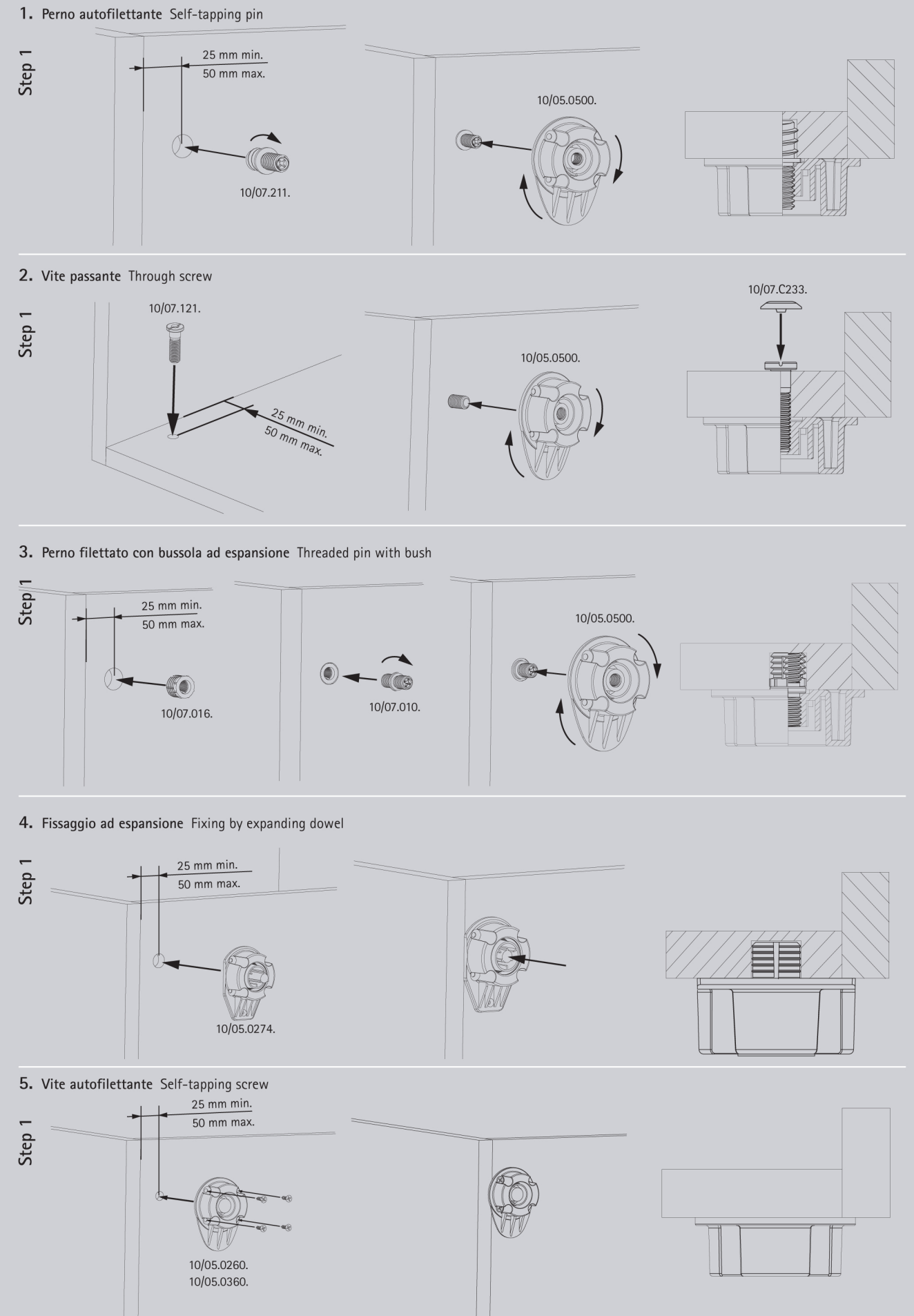
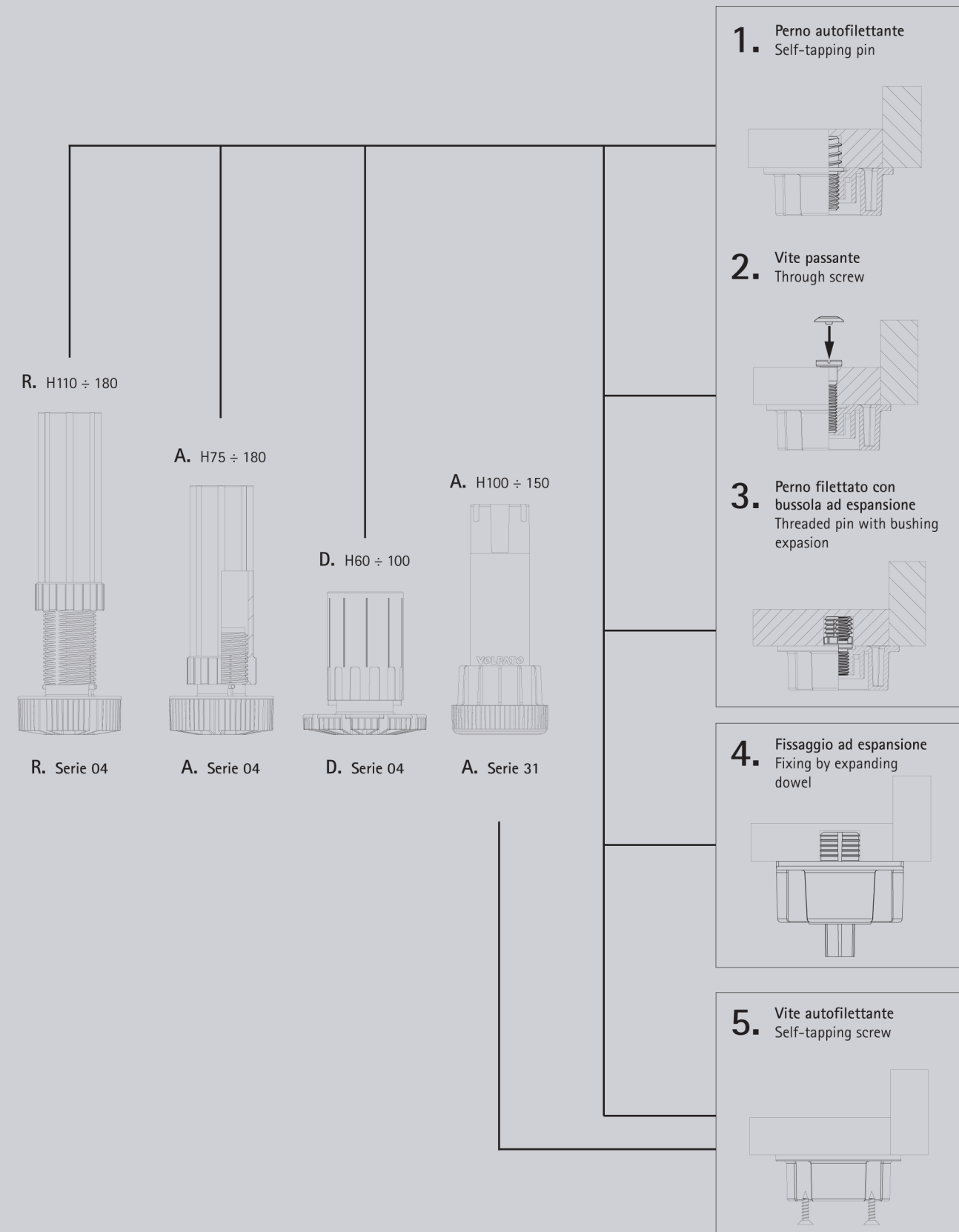


Piedi regolabili con basetta

Adjustable legs with base

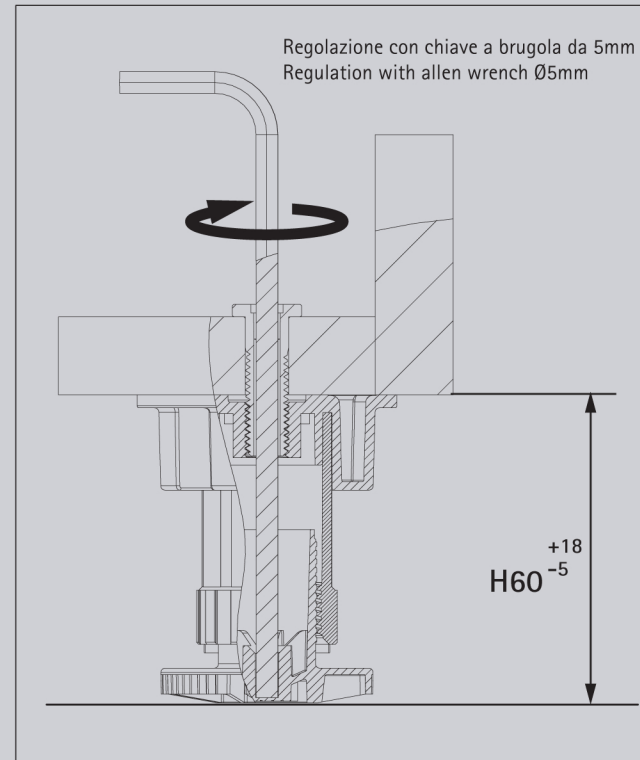
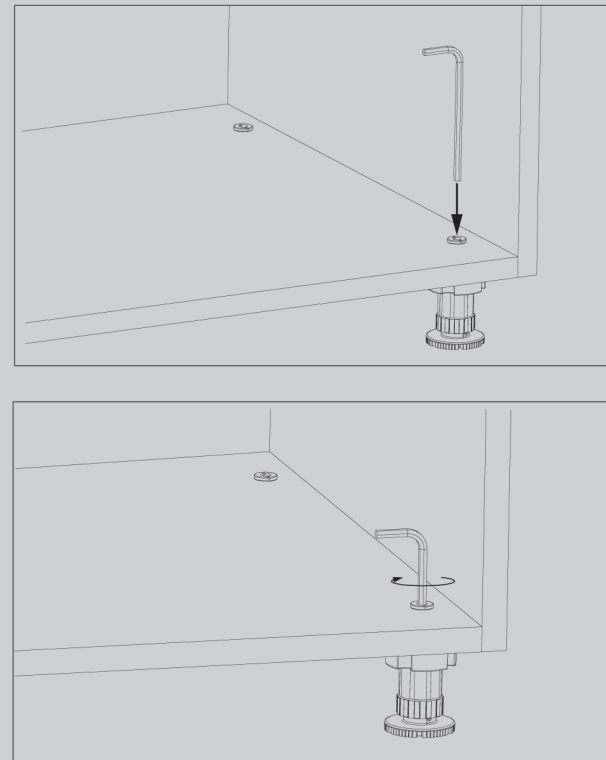
Sistema tubi e basette Serie 04 - Serie 31
System tubes and bases



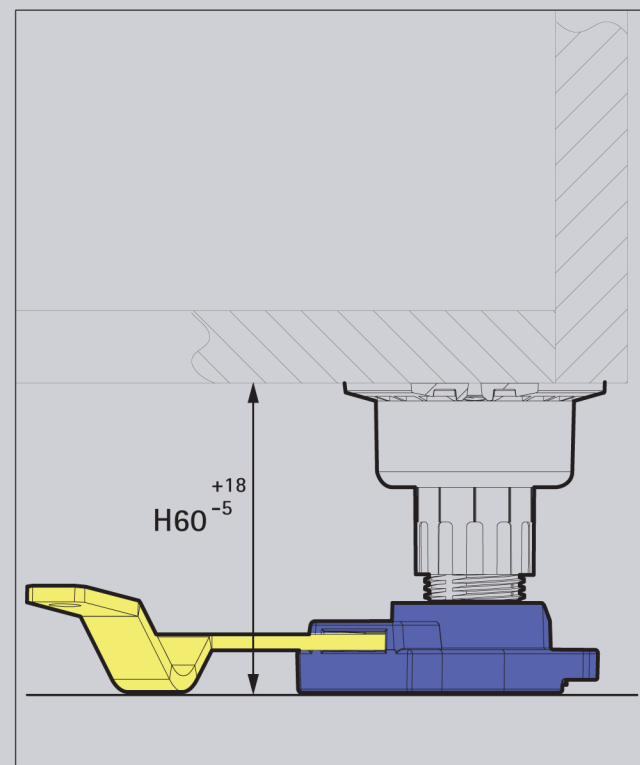
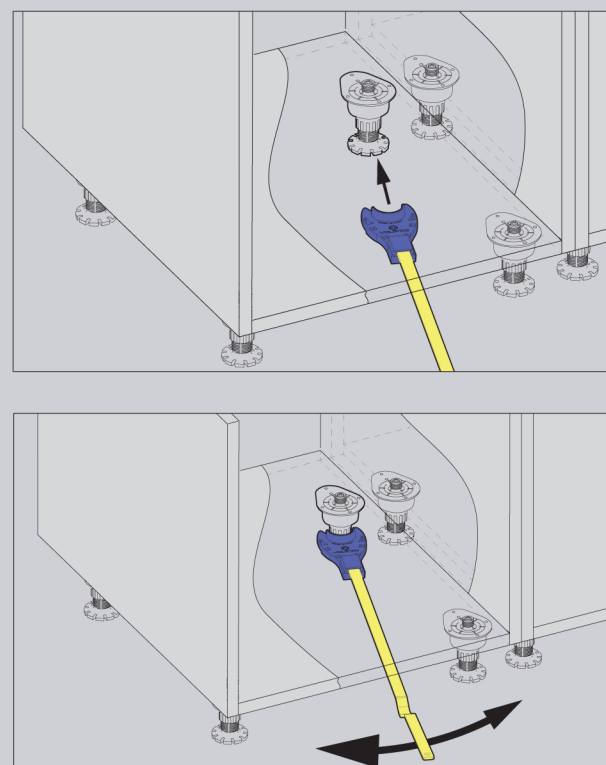
Piedi regolabili con basetta Adjustable legs with base

Sistema tubi e basette Serie 04 H60 mm
System tubes and bases

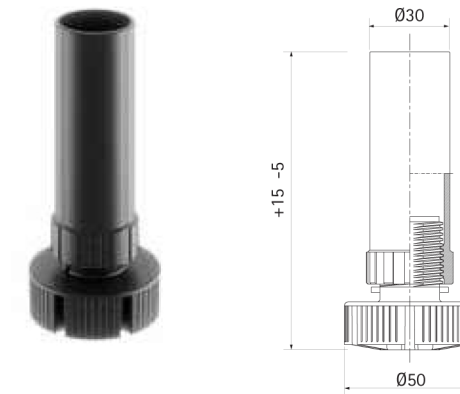
A. Fissaggio con vite forata M10 cod.10/07.121
Fixing with perforated screw M10 cod. 10/07.121



B. Regolazione con chiave EasyKey 15.01.002
Regulation with EasyKey 15.01.002



Serie 04 Piedi regolabili con basetta Adjustable legs with base



Code	H mm	pcs	kg	pcs
10/04.A075	75	400	12	4.000
10/04.A080	80	400	13	4.000
10/04.A090	90	400	14	4.000
10/04.A100	100	400	15	4.000
10/04.A110	110	400	16	4.000
10/04.A120	120	400	17	4.000
10/04.A130	130	400	18	4.000
10/04.A140	140	200	10	4.000
10/04.A150	150	200	10	4.000
10/04.A160	160	200	11	4.000
10/04.A170	170	200	11	4.000
10/04.A180	180	200	12	4.000



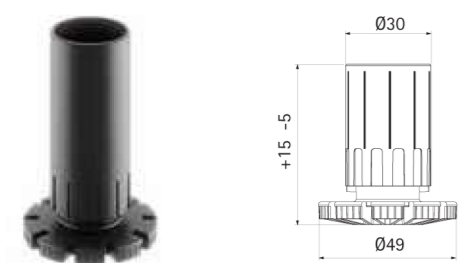
Code	H mm	pcs	kg	pcs
10/04.R100	100-150	400	17	4.000
10/04.R110	110-160	400	18	4.000
10/04.R120	120-170	400	19	4.000
10/04.R130	130-180	400	20	4.000
10/04.R140	140-190	200	11	4.000
10/04.R150	150-200	200	11	4.000
10/04.R160	160-210	200	12	4.000
10/04.R170	170-220	200	12	4.000
10/04.R180	180-230	200	13	4.000

Serie 04 Piedi regolabili con basetta Adjustable legs with base

Serie 04 Basette Bases



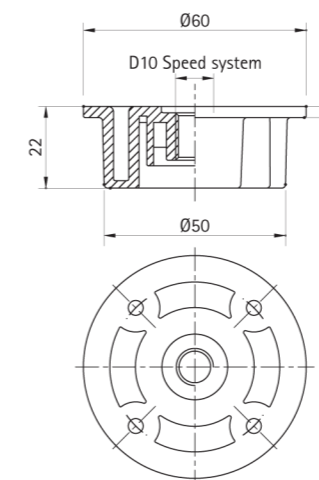
Code	H mm	pcs	kg	pcs
10/04.M100	100	400	14	4.000
10/04.M120	120	400	18	4.000
10/04.M160	160	200	22	4.000



Code	H mm	pcs	kg	pcs
10/04.D060	60	300	7	3.000
10/04.D070	70	300	7,5	3.000
10/04.D080	80	300	8	3.000
10/04.D100	100	200	9	3.000



Doppio principio
Speed system



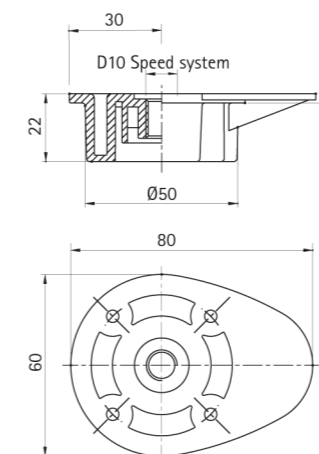
Code	pcs	kg	pcs
10/05.0400	400	10	4.000

Viti di fissaggio utilizzate
Screws to be used

10/07.131
10/07.137
10/07.138
10/07.139
10/07.211
10/07.212
10/07.222



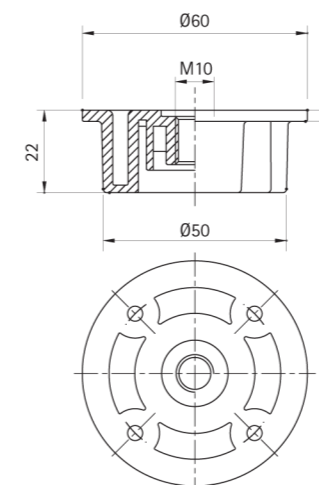
Doppio principio
Speed system



Code	pcs	kg	pcs
10/05.0500	400	11	4.000

Viti di fissaggio utilizzate
Screws to be used

10/07.131
10/07.137
10/07.138
10/07.139
10/07.211
10/07.212
10/07.222

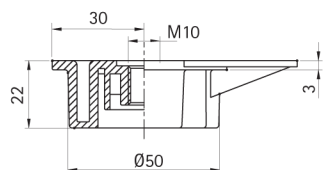


Code	pcs	kg	pcs
10/05.0251	400	10	4.000

Viti di fissaggio utilizzate
Screws to be used

10/07.111
10/07.121
10/07.122
10/07.124
10/07.125
10/07.128Z
10/07.129

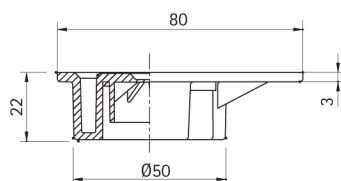
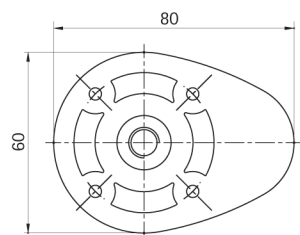
Serie 04 Basette Bases



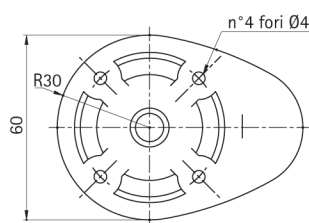
Code	pcs	kg	pcs
10/05.0261	400	11	4.000

Viti di fissaggio utilizzate
Screws to be used

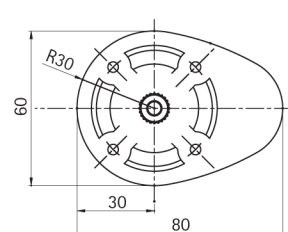
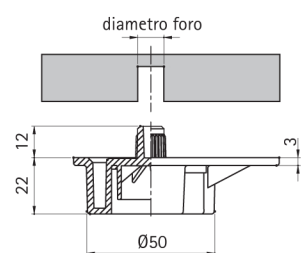
- 10/07.111
- 10/07.121
- 10/07.122
- 10/07.124
- 10/07.125
- 10/07.128Z
- 10/07.129



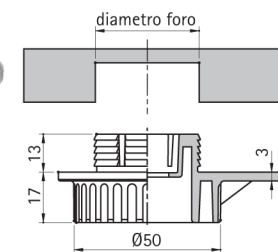
Code	pcs	kg	pcs
10/05.0260	400	12	4.000



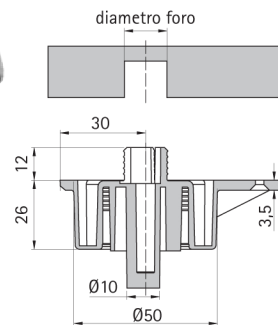
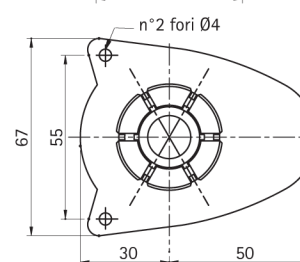
Code	mm	pcs	kg	pcs
10/05.0262	10	400	12	4.000



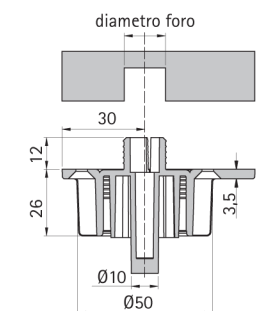
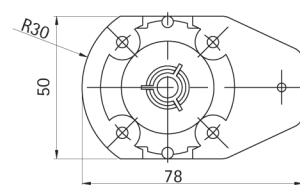
Serie 04 Basette Bases



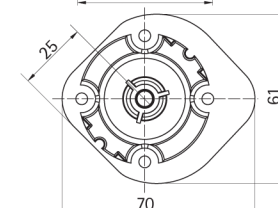
Code	mm	pcs	kg	pcs
10/05.0268	35	400	11	4.000



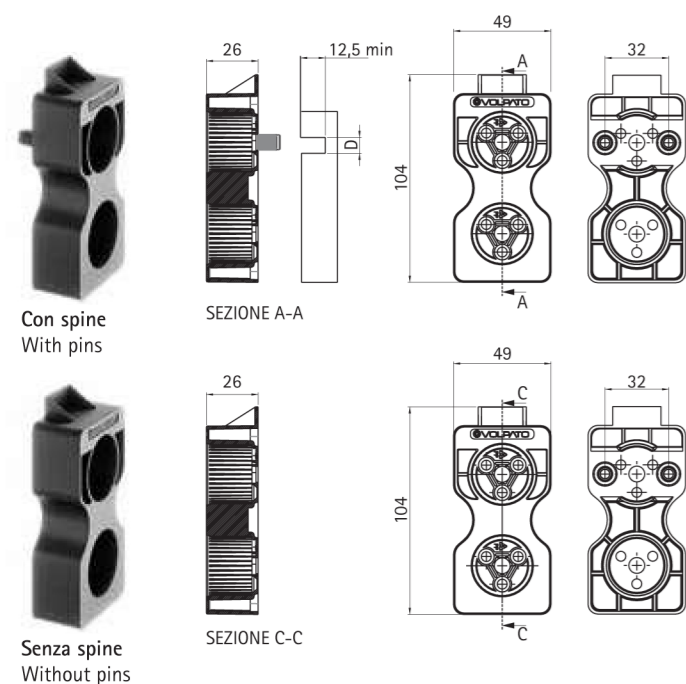
Code	mm	pcs	kg	pcs
10/05.0272	10	400	12	4.000
10/05.0273	15	400	14	4.000
10/05.0274	16	400	14	4.000
10/05.0275	13	400	14	4.000



Code	mm	pcs	kg	pcs
10/05.0282	10	400	12	4.000
10/05.0283	15	400	14	4.000
10/05.0284	16	400	14	4.000
10/05.0285	13	400	14	4.000



Serie 04 Basette Bases



Code	pcs	kg	pcs
10/05.0701C	400	14	4.000

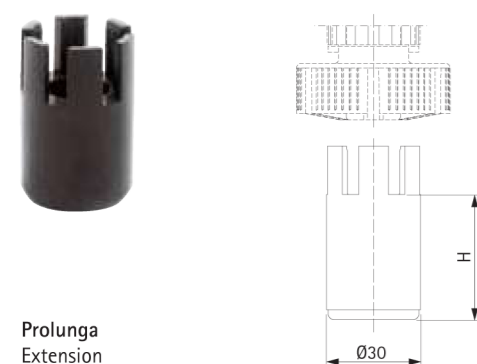
Code	pcs	kg	pcs
10/05.0702C	400	14	4.000

Serie 31 Piedi regolabili con basetta Adjustable legs with base

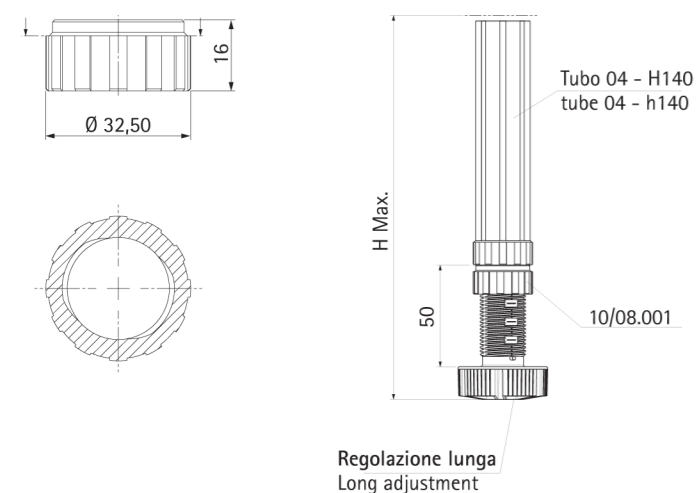


Code	H mm	pcs	kg	pcs
10/31.A100	100	400	16	4.000
10/31.A120	120	400	17	4.000
10/31.A140	140	200	10	4.000
10/31.A150	150	200	10	4.000

Serie 04 Accessori Accessories



Code	H mm	pcs	kg	pcs
10/05.183	30	1.000	30	2.000
10/05.184	40	1.000	30	2.000
10/05.185	50	1.000	30	2.000

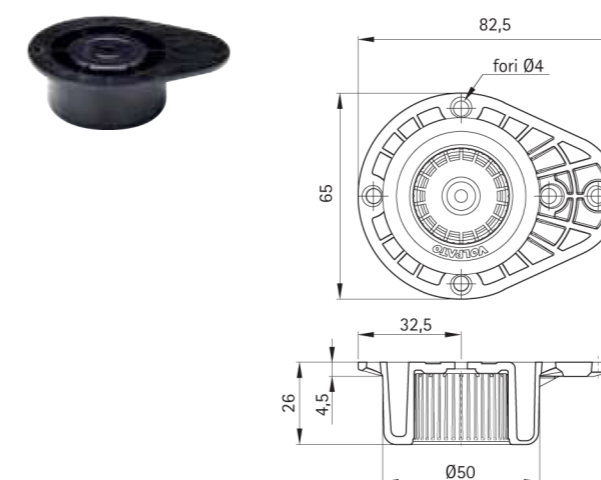


Code	pcs	kg	pcs
10/08.001	1000	6	-

Fornita non montata
Supplied unmounted

Ghiera di serraggio.
Accessorio utile nel campo di altezze H>120mm
con regolazione + 50 mm per bloccare e stabilizzare il piedino.
Tightening ring nut.
Accessory useful for heights 120 mm and over
with a +50 mm adjustment to lock and stabilize the leg.

Serie 31 Basette Bases



Code	pcs	kg	pcs
10/05.0360	400	10	4.000