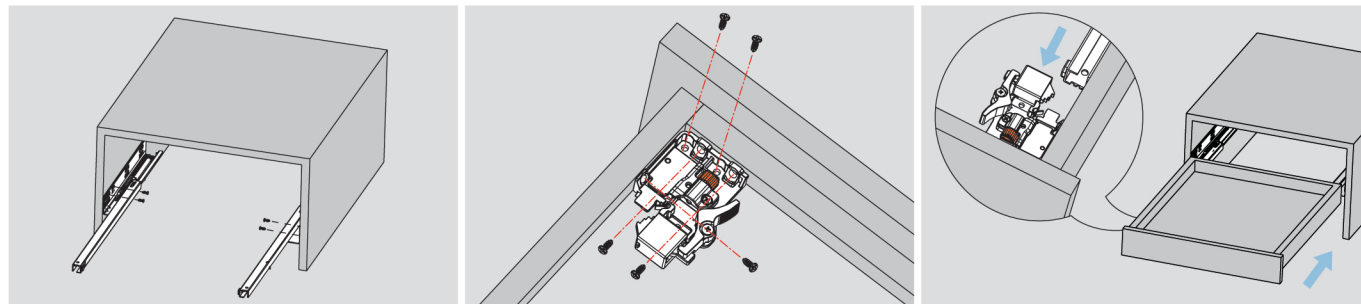


ASSEMBLY AND ADJUSTMENT

Assembly and Adjustment
(for D-MOTION Partial Extension Undermount Slides)



Drawer Assembly with Locking Device

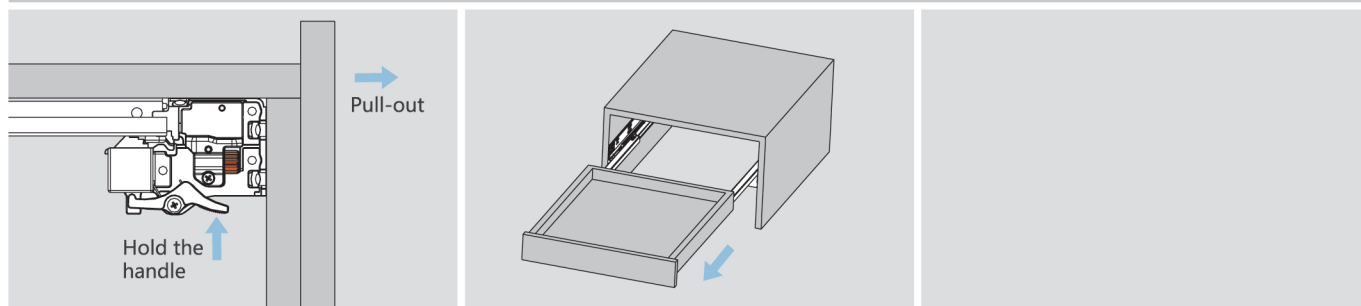


Fix the slide onto the cabinet.

Fix the locking device onto the drawer bottom.

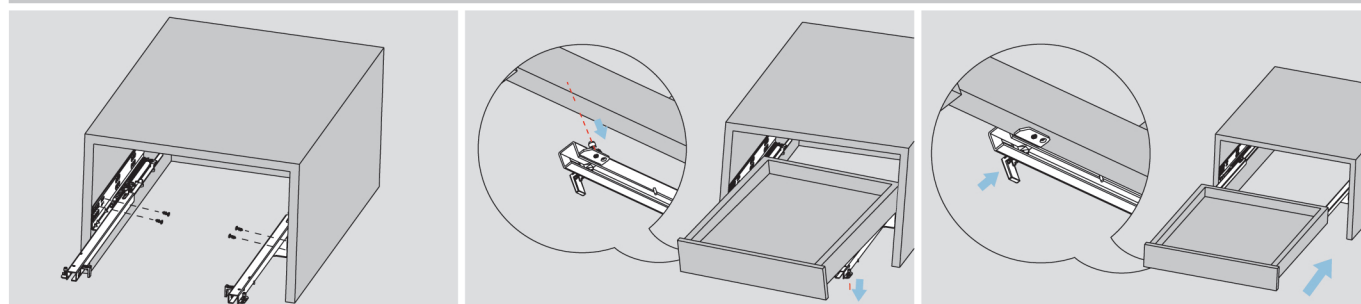
Lay the drawer bottom onto the slide then push the drawer into the cabinet.

Removal with Locking Device



For removal, hold the handle and pull out the drawer.

Drawer Assembly with Peg

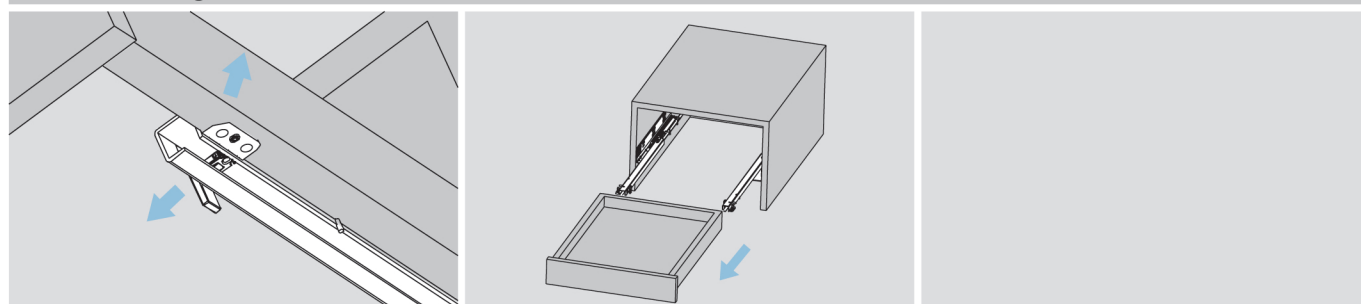


Fix the slide onto the cabinet.

Pull out the drawer member of the slide from the cabinet, lay the drawer onto the slide.

Press the locking pin into the drawer side to lock the position of the drawer.

Removal with Peg



For removal, pull out the locking pin from the drawer side. Lift the drawer and pull it out from the cabinet.

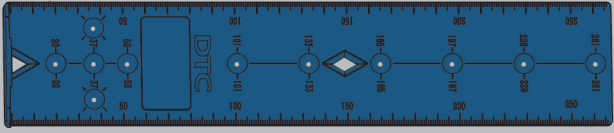
We are continuously developing new products.
For updated product information, please log onto www.dtcetc.com

ACCESSORY

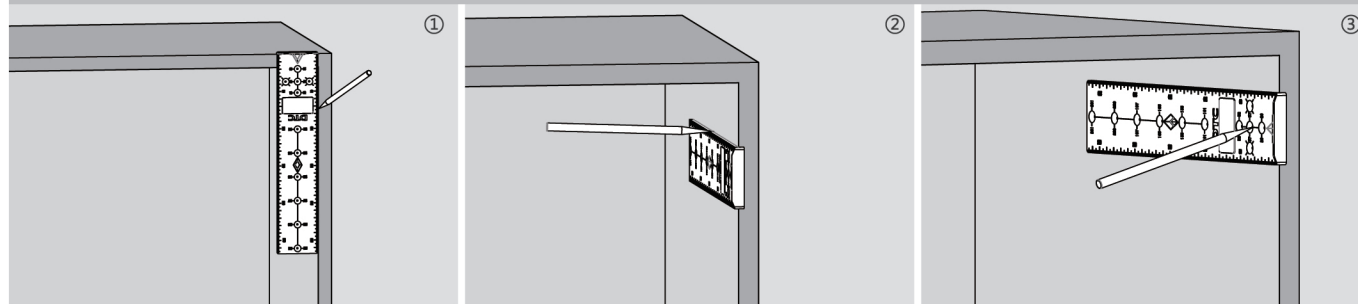
Marking Template (for Drawer Slide System)



Order Information

	Universal Marking Template
	Blue (H23)
Item No.	DT02
Pcs/ctn	100

Marking Position

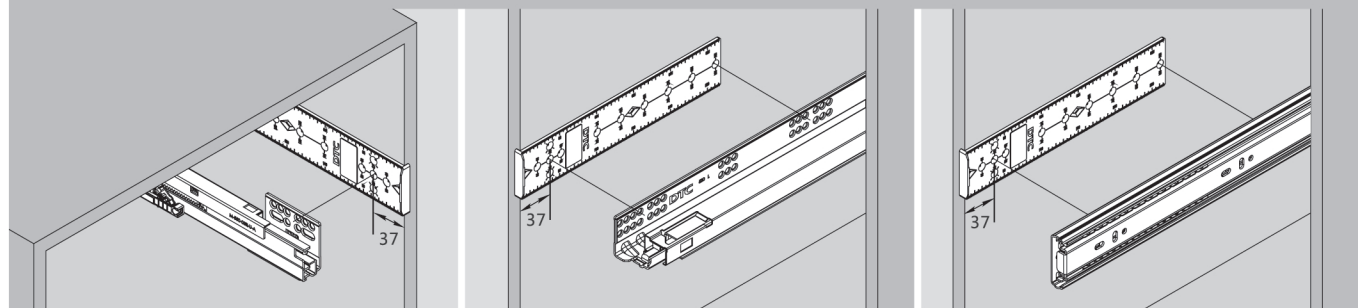


①② Mark the vertical position of mounting hole

③ Mark the longitudinal position of mounting hole

Application

Drawer Slide System: Double-wall Drawer System / Undermount Slide Series / Ball Bearing Slide Series

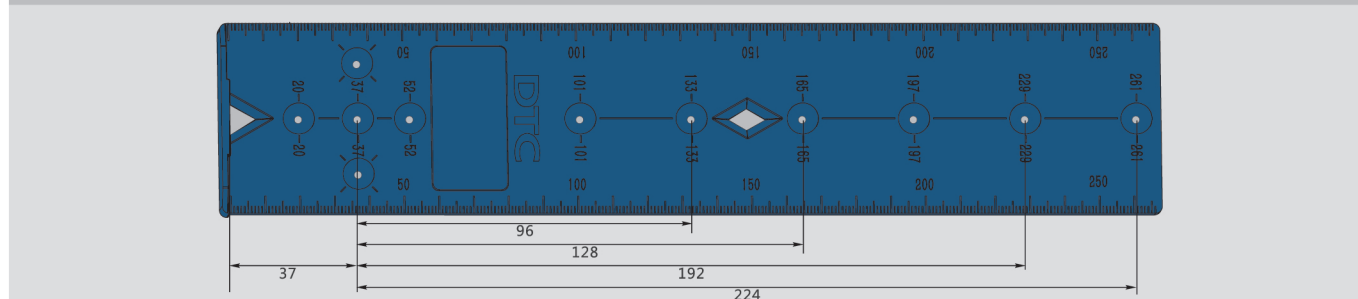


Double-wall Drawer System

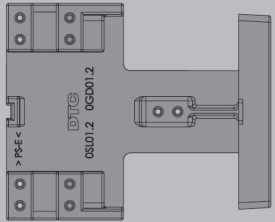
Undermount Slide Series

Ball Bearing Slide Series

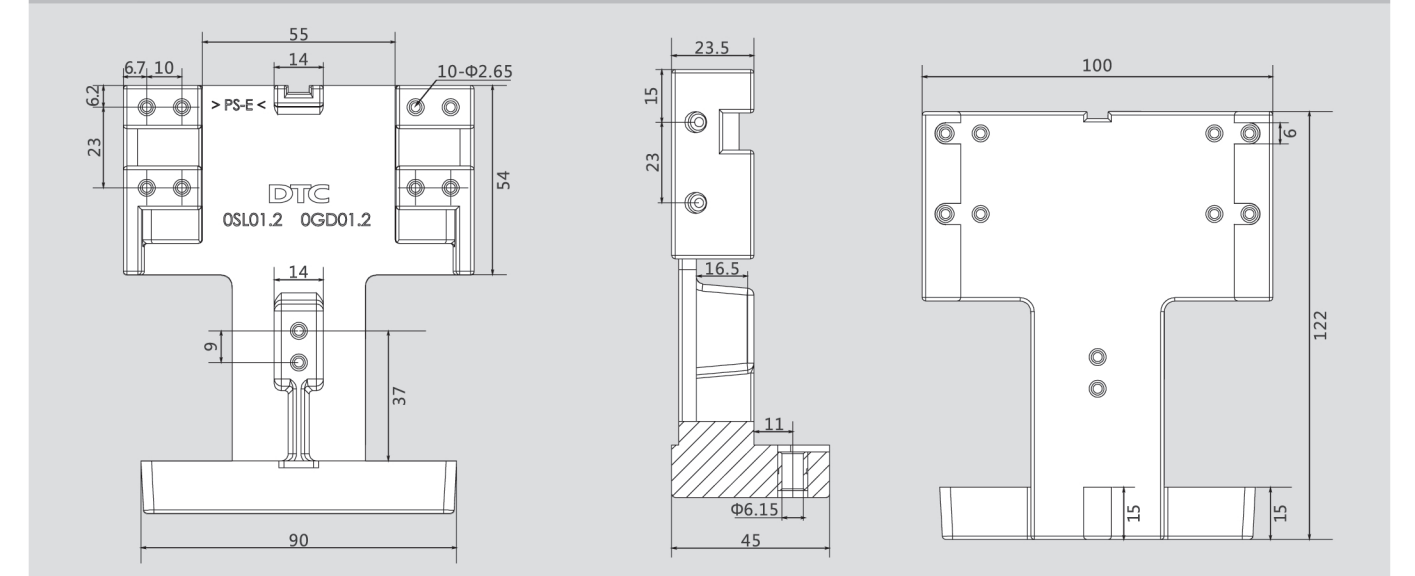
Mounting Hole Positions for Drawer Slide System



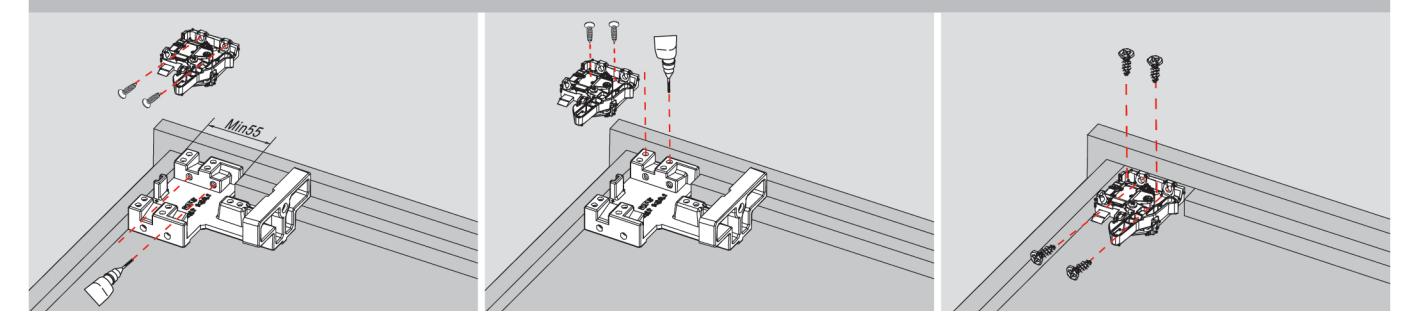
Order Information

	Undermount Slide Drawer Assembly Tool
Item No.	DT01
Pcs/ctn	20

Assembly Tool Dimensions(mm)

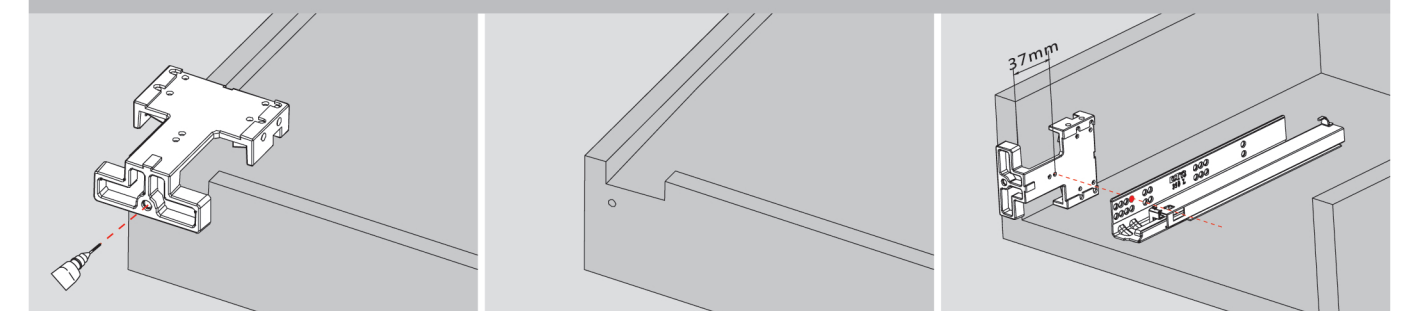


Drawer Assembly



Mark the position of the locking device and fix the locking device onto the drawer bottom

Drawer Assembly



Drill a hole (Φ6, depth 10mm)

mark the position of the fourth hole for standard drawer