

UNDERMOUNT  
SLIDE SERIES

MAGIC-MOVE



# MAGIC-MOVE

Soft-close, synchronization, silent system

## Perfect Motion for Drawers



- DTC Magic-Move Soft-close Undermount Slides, full extension with integrated synchronization silent system.
- 3D adjustment - First Choice for Quality kitchen cabinets and wardrobes.
- Dynamic Loading Capacity: 40/60kg



Quietness



Intelligence



Durability



Eco-Friendliness



MAGIC-MOVE offers more options for furniture design and brings the smooth and silent running action through synchronized full extension design, to enable beautiful and fashionable.

**DTC**  
Global Quality Standard

UNDERMOUNT  
SLIDE SERIES  
MAGIC-MOVE



MAGIC-MOVE undermount slides are suited for various drawer sizes and enable a soft and effortless experience.



Dynamic load capacities of 40kg and 60kg as well as soft-close, push-open and soft-close +push-open functions offer a range of configurations for any application.

**DTC**  
Global Quality Excellence

UNDERMOUNT  
SLIDE SERIES  
MAGIC-MOVE



MAGIC-MOVE integrates synchronized motion which ensures effortless running action making it the preferred choice for high-quality furniture. Full extension makes the entire drawer easy to access.



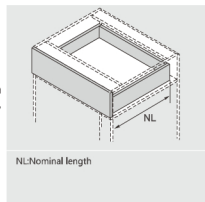
### PRODUCT



### DESCRIPTION

- Load capacity: 60kg
- Finish: zinc plated
- Length: 450-750mm, full extension
- Silent system guarantees smooth run without noise
- 2D adjustment, up&down: 0-2.5mm, side: ± 1.5mm
- 3D adjustment, up&down: 0-2.5mm, side: ± 1.5mm, depth: 0-3mm
- Maximum drawer side thickness: 16mm

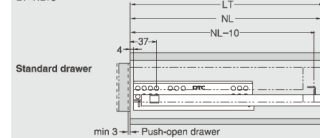
### SPACE REQUIREMENT



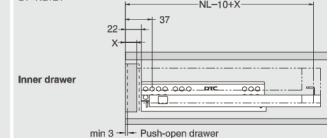
### PLANNING

#### Installation Dimensions(mm)

NL=Nominal Slide Length  
 LT=Internal Cabinet Depth  
 LT<NL+3



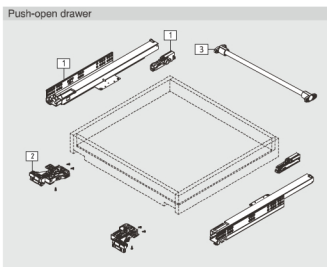
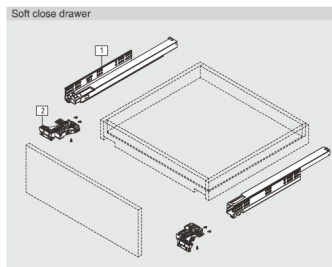
NL=Nominal Slide Length  
 LT=Internal Cabinet Depth  
 LT=NL+21



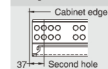
### SOFT CLOSE DRAWER/PUSH-OPEN DRAWER/SOFT CLOSE&PUSH-OPEN DRAWER

<b>1</b>	Slides (left/right)	
	Pre-zinc Steel (F02)	
NL	Soft close item No.	Set/ctn
	Push-open item No.	Set/ctn
450mm	TS11450H	10
	TF11450H	6
500mm	TS11500H	10
	TF11500H	6
550mm	TS11550H	10
	TF11550H	6
600mm	TS11600H	10
	TF11600H	6
650mm	TS11650H	10
	TF11650H	6
700mm	TS11700H	10
	TF11700H	6
750mm	TS11750H	10
	TF11750H	6

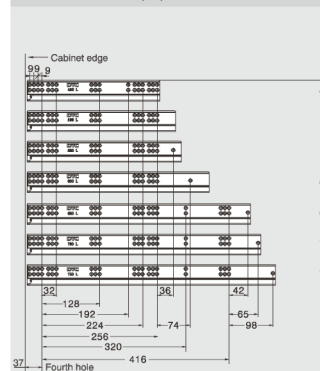
<b>2</b>	2D Locking Device (Left/Right)	
	Grey(H11)	
	Item No.	0TSD01-A
<b>2</b>	3D Locking Device (Left/Right)	
	Grey(H11)	
	Item No.	0TSD02-A
<b>3</b>	Rod for Push-open Synchronization (For cutting to size, 1100mm. Cutting: internal cabinet width LW-172)	
	Item No.	HTOF02



#### Fixing Hole Position for Inner Drawer(mm)

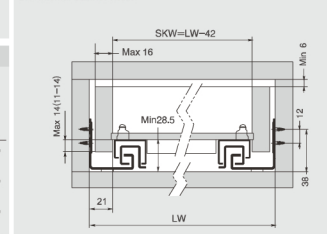


#### Screw Positions of the Slides(mm)

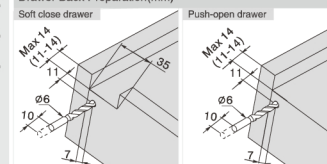


#### Installation Dimensions(mm)

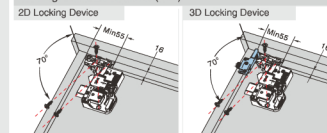
SKW=Internal Drawer Width  
 LW=Internal Cabinet Width



#### Drawer Back Preparation(mm)



#### Locking Device Installation(mm)

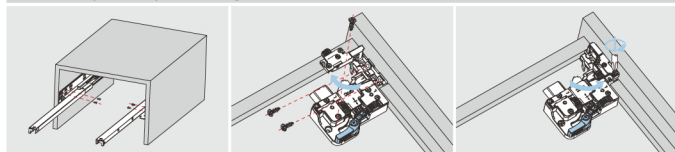


# ASSEMBLY AND ADJUSTMENT

Assembly and Adjustment(for MAGIC-MOVE)



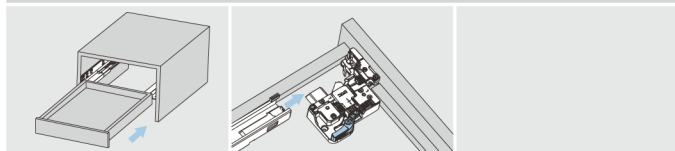
## Drawer Assembly with 3D Adjustment Locking Device



Fix the slide onto the cabinet.

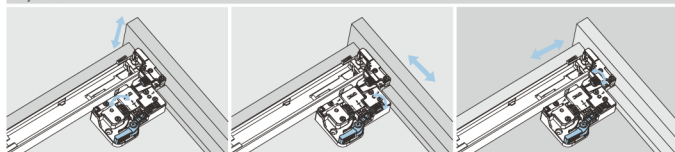
Move out the adjusting part and fix the locking device onto the drawer bottom.  
Put the adjusting part back and tighten the screws.

## Drawer Assembly with 3D Adjustment Locking Device



Lay the drawer bottom onto the slide then push the drawer into the cabinet.

## Adjustment

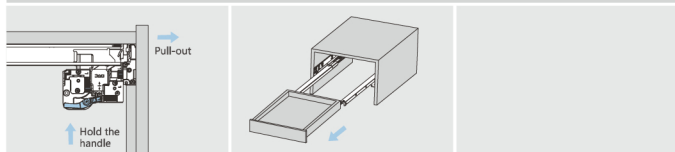


Up&down adjustment

Side adjustment

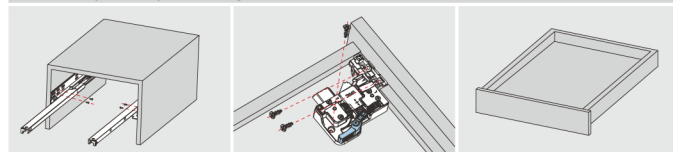
Depth adjustment

## Removal



For removal, hold the handle and pull out the drawer.

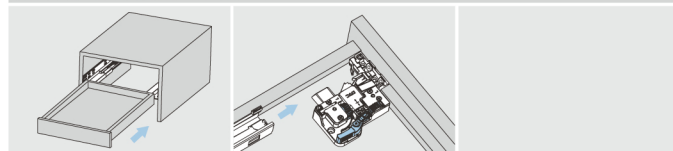
## Drawer Assembly with 2D Adjustment Locking Device



Fix the slide onto the cabinet.

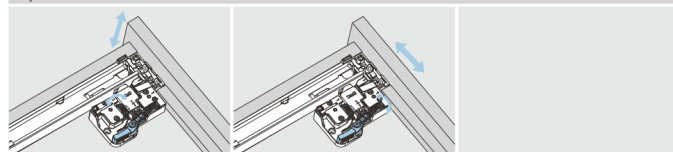
Fix the locking device onto the drawer bottom.

## Drawer Assembly with 2D Adjustment Locking Device



Lay the drawer bottom onto the slide then push the drawer into the cabinet.

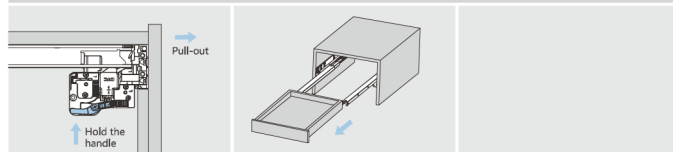
## Adjustment



Up&down adjustment

Side adjustment

## Removal



For removal, hold the handle and pull out the drawer.