

UNDERMOUNT
SLIDE SERIES

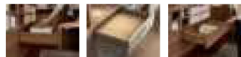
D-MOTION PLUS



D-MOTION PLUS

A Strong Undermount Slide with Many Benefits

**Robust Components Ensure
Smooth and Silent Running
Action**



- 7/8 extension provides a full access experience.
- Undermount slides with silent, soft, and effortless closing.
- Quick release locking device or pin-mount connection options meet application requirements.
- The redesigned cabinet member increases stability over a lifetime of use.



Quietness



Intelligence



Durability



Eco-Friendliness



D-MOTION PLUS makes drawers of any size more stable and comfortable to operate. Locking pins safely secure the drawer box to the slides.

DTC
Global Quality Excellence

UNDERMOUNT
SLIDE SERIES
D-MOTION PLUS



The innovative structure of the undermount slide produces a minimal opening force for a comfortable experience. D-MOTION PLUS is widely used in bedrooms, bathrooms and other living spaces in the home.



D-MOTION PLUS improves the end user's access over drawers having only partial extension slides. It provides a full range of solutions for high-quality wood furniture throughout the home.

DTC
Global Quality Innovations

UNDERMOUNT
SLIDE SERIES
D-MOTION PLUS



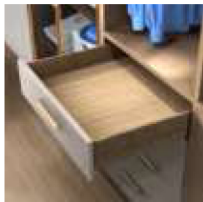
D-MOTION PLUS, with 7/8 extension, enables full access to everything stored in a drawer.

D-MOTION PLUS

GG80 Series 2/3 Extension Soft-close Undermount Slides with Peg



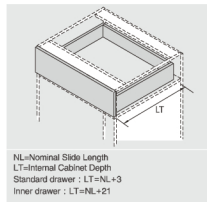
PRODUCT



DESCRIPTION

- Load capacity: 25kg
- Finish: zinc plated
- Length: 250-600mm
- 2/3 extension
- Drawer up&down adjustment: 0-+4mm
- Tool free assembly and removal of drawer
- Silent system guarantees smooth run without noise
- Maximum drawer side thickness: 16mm

SPACE REQUIREMENT



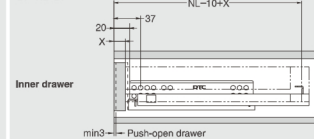
PLANNING

Installation Dimensions(mm)

NL=Nominal Slide Length
LT=Internal Cabinet Depth
LT=NL+3



NL=Nominal Slide Length
LT=Internal Cabinet Depth
LT=NL+21

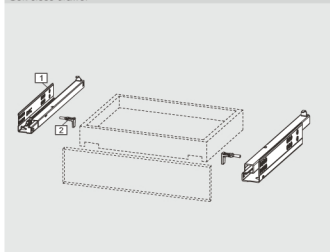


SOFT CLOSE DRAWER/PUSH-OPEN DRAWER

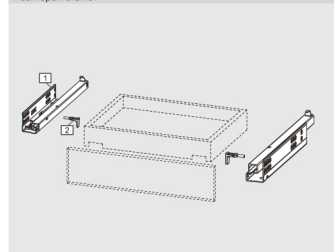
1	Slides (left/right)
	Pre-zinc Steel (F02)
NL	Soft close Item No. Push-open Item No. Set/cin
250mm	GG80250H GG80250G 10
270mm	GG80270H GG80270G 10
300mm	GG80300H GG80300G 10
350mm	GG80350H GG80350G 10
400mm	GG80400H GG80400G 10
450mm	GG80450H GG80450G 10
500mm	GG80500H GG80500G 10
550mm	GG80550H GG80550G 10
600mm	GG80600H GG80600G 10

2	Locking Pin
	Grey(H11)
Item No.	GGJ502

Soft close drawer



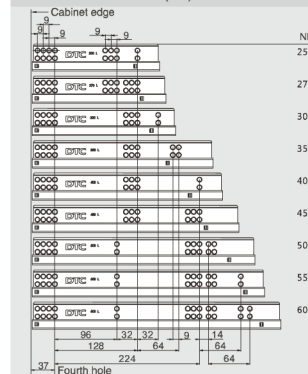
Push-open drawer



Fixing Hole Position for Inner Drawer(mm)

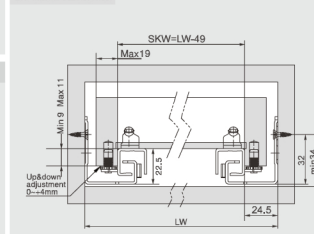


Screw Positions of the Slides(mm)

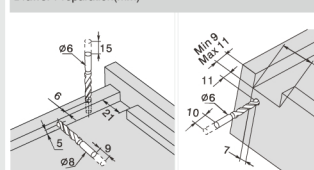


Installation Dimensions(mm)

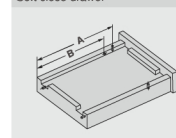
LW=Internal Cabinet Width



Drawer Preparation(mm)

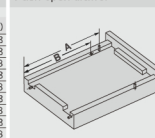


Soft close drawer



NL (mm)	A (mm)	B (mm)
250	220	188
270	230	198
300	245	213
350	270	238
400	305	273
450	330	298
500	355	323
550	390	358
600	415	383

Push-open drawer



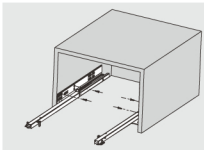
NL (mm)	A (mm)	B (mm)
250	221	189
270	241	209
300	271	239
350	321	289
400	371	339
450	421	389
500	471	439
550	521	489
600	571	539

ASSEMBLY AND ADJUSTMENT

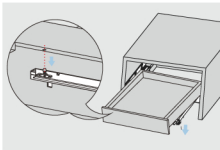
Assembly and Adjustment
(for D-MOTION PLUS Partial Extension Undermount Slides)



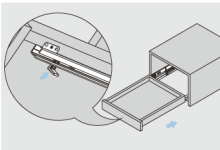
Drawer Assembly with Peg



Fix the slide onto the cabinet.

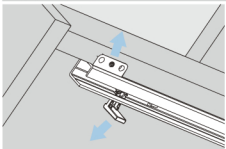


Pull out the drawer member of the slide from the cabinet, lay the drawer onto the slide.

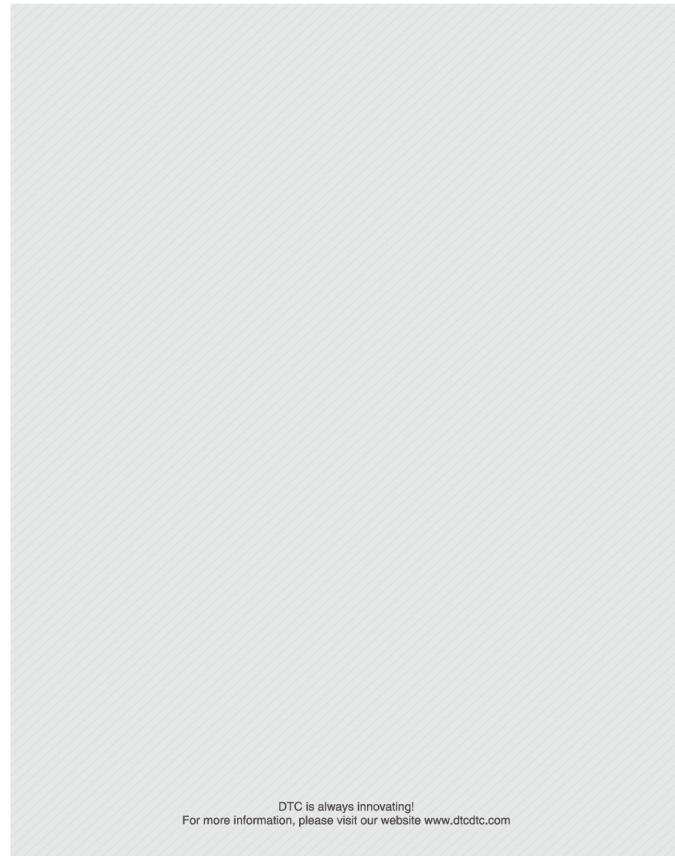
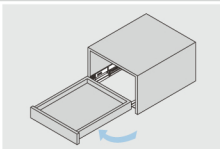


Press the locking pin into the drawer side to lock the position of the drawer.

Removal with Peg



For removal, pull out the locking pin from the drawer side. Lift the drawer and pull it out from the cabinet.



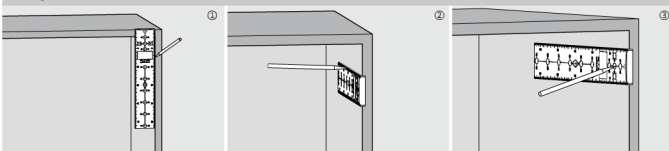
DTC is always innovating!
For more information, please visit our website www.dtcdtc.com



Order Information

Universal Marking Template	
BlueH230	
Item No.	DT02
Pcs/ctn	100

Marking Position

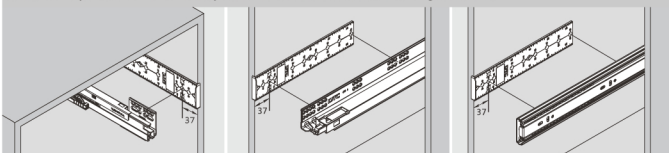


① Mark the vertical position of mounting hole

② Mark the longitudinal position of mounting hole

Application

Drawer Slide System: Double-wall Drawer System / Undermount Slide Series / Ball Bearing Slide Series

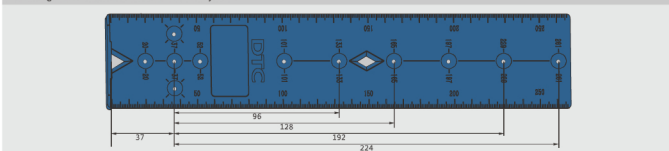


Double-wall Drawer System

Undermount Slide Series

Ball Bearing Slide Series

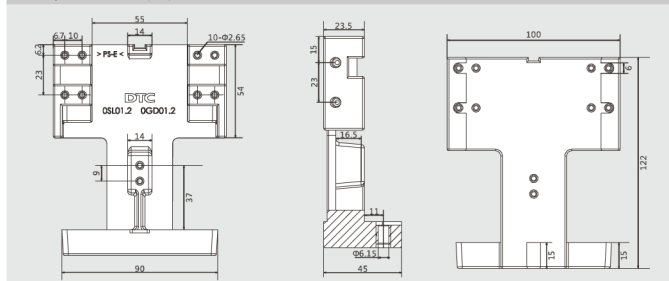
Mounting Hole Positions for Drawer Slide System



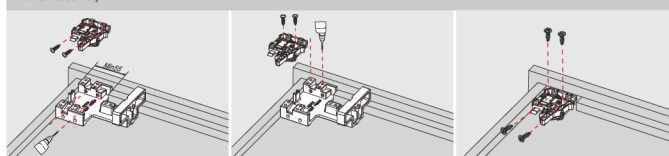
Order Information

Undermount Slide Drawer Assembly Tool	
Item No.	DT01
Pcs/ctn	20

Assembly Tool Dimensions (mm)

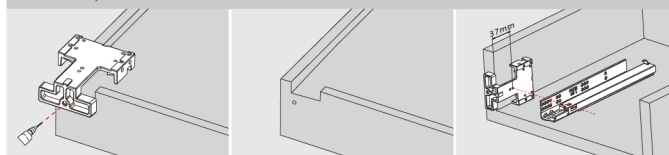


Drawer Assembly



Mark the position of the locking device and fix the locking device onto the drawer bottom

Drawer Assembly



Drill a hole (ø6, depth 10mm)

mark the position of the fourth hole for standard drawer