



HINGE  
SERIES

PIVOT-PRO

# PIVOT-PRO

Perfect motion for every single space

## Door Closing-Soft and Smooth



- The well-made DTC integrated soft-close hinges fit with a plenty of cabinet doors, supporting and facilitating designers ideas. The hinge's effortless opening, evenly speeded soft-closing and long durability contribute to the enjoyment of the furniture users.
- 3D adjustments providing exceptional functions: without loosening one screw, up & down, in & out and side to side adjustments are done.



Quietness



Intelligence



Durability



Eco-Friendliness





PIVOT-PRO combines an elegant appearance with durable components, including an integrated damping system to ensure effortless opening and smooth soft-closing of doors.

**DTC**  
Global Quality Benchmark



# HINGE SERIES PIVOT-PRO



A full range of standard and special application hinges provides options for various styles of cabinets and furniture. The new titanium black and titanium gold finish options provide a high fashion appearance as well as additional corrosion resistance.



### ORDER INFORMATION

		S32 dowel	Euro screw

#### Two-hole mounting plate

		Pcs/ctn 200	Color Nickel plated(A01)	Height of mounting plate	Item No.	Item No.	Item No.
				H=0	89H00AQ	89H01AQ	89H02AQ
				H=2	89H20AQ	89H21AQ	89H22AQ
				H=4	89H40AQ	89H41AQ	89H42AQ
				H=9	89H90AQ	89H91AQ	89H92AQ
H=18	89H180AQ	89H181AQ	89H182AQ				

#### Four-hole mounting plate

		Pcs/ctn 200	Color Nickel plated(A01)	Height of mounting plate	Item No.		
				H=0	89H00EQ		
				H=2	89H20EQ		
				H=4	89H40EQ		
				H=9	89H90EQ		
H=18	89H180EQ						

#### Up&down cam adjustable mounting plate

		Pcs/ctn 200	Color Nickel plated(A01) Specially treated(A11)	Height of mounting plate	Item No.	Item No.	Item No.
				H=0	89T00TQ	89T01TQ	89T02TQ
				H=2	89T20TQ	89T21TQ	89T22TQ
				H=4	89T40TQ	89T41TQ	89T42TQ
				H=9	89T90TQ	89T91TQ	89T92TQ
H=18	89T180TQ	89T181TQ	89T182TQ				

#### Up&down cam adjustable mounting plate

		Pcs/ctn 200	Color Nickel plated(A01)	Height of mounting plate	Item No.	Item No.	Item No.
				H=0	85T00TQ	85T01TQ	85T02TQ
				H=2	85T20TQ	85T21TQ	85T22TQ
H=4	85T40TQ	85T41TQ	85T42TQ				

#### In-line mounting plate

		Pcs/ctn 200	Color Nickel plated(A01)	Height of mounting plate	Item No.		
				H=2	80H20YQ		
H=4	80H40YQ						

### ORDER INFORMATION

Q32 dowel	V32 dowel	N32 dowel	G32 dowel	L32 dowel	M32 dowel	PS32 dowel

Item No.	Item No.	Item No.	Item No.	Item No.	Item No.	Item No.
89H0QAQ	89H04AQ	89H0NAQ	89H0GAQ	89H0LAQ	89H0MAQ	89H0PAQ
89H2QAQ	89H24AQ	89H2NAQ	89H2GAQ	89H2LAQ	89H2MAQ	89H2PAQ
89H4QAQ	89H44AQ	89H4NAQ	89H4GAQ	89H4LAQ	89H4MAQ	89H4PAQ
89H9QAQ	89H94AQ	89H9NAQ	89H9GAQ	89H9LAQ	89H9MAQ	89H9PAQ
89H18QAQ	89H184AQ	89H18NAQ	89H18GAQ	89H18LAQ	89H18MAQ	89H18PAQ

--	--	--	--	--	--	--

Item No.	Item No.	Item No.	Item No.	Item No.	Item No.	Item No.
89T0QTQ	89T04TQ	89T0NTQ	89T0GTQ	89T0LTQ	89T0MTQ	89T0PTQ
89T2QTQ	89T24TQ	89T2NTQ	89T2GTQ	89T2LTQ	89T2MTQ	89T2PTQ
89T4QTQ	89T44TQ	89T4NTQ	89T4GTQ	89T4LTQ	89T4MTQ	89T4PTQ
89T9QTQ	89T94TQ	89T9NTQ	89T9GTQ	89T9LTQ	89T9MTQ	89T9PTQ
89T18QTQ	89T184TQ	89T18NTQ	89T18GTQ	89T18LTQ	89T18MTQ	89T18PTQ

Item No.	Item No.	Item No.	Item No.	Item No.	Item No.	Item No.
85T0QTQ	85T04TQ	85T0NTQ	85T0GTQ	85T0LTQ	85T0MTQ	85T0PTQ
85T2QTQ	85T24TQ	85T2NTQ	85T2GTQ	85T2LTQ	85T2MTQ	85T2PTQ
85T4QTQ	85T44TQ	85T4NTQ	85T4GTQ	85T4LTQ	85T4MTQ	85T4PTQ

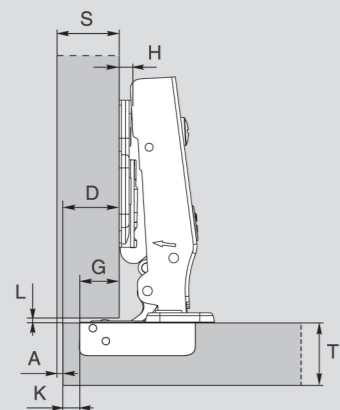
--	--	--	--	--	--	--





### PLANNING

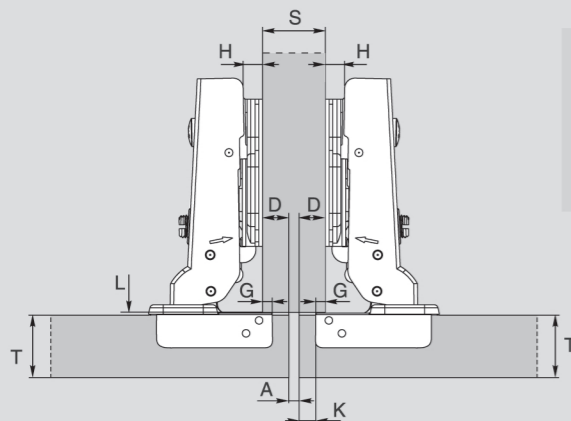
#### Application with full overlay door



- |                                   |                                  |
|-----------------------------------|----------------------------------|
| S = Thickness of the cabinet side | A = Reveal                       |
| D = Required door overlay         | L = Gap between door and carcass |
| T = Door thickness                | H = Height of the mounting plate |
| K = Drilling distance             | G = Hinge constant               |

Whatever door overlay is required, you can select from our range the combination of both the type of hinge arm and the thickness of mounting plate necessary to solve your construction problem and avoid the need to stock too many different components.

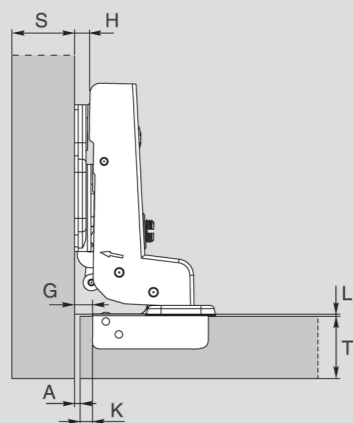
#### Application with half overlay door



- |                                   |                                  |
|-----------------------------------|----------------------------------|
| S = Thickness of the cabinet side | A = Reveal                       |
| D = Required door overlay         | L = Gap between door and carcass |
| T = Door thickness                | H = Height of the mounting plate |
| K = Drilling distance             | G = Hinge constant               |

Whatever door overlay is required, you can select from our range the combination of both the type of hinge arm and the thickness of mounting plate necessary to solve your construction problem and avoid the need to stock too many different components.

#### Application with inset door

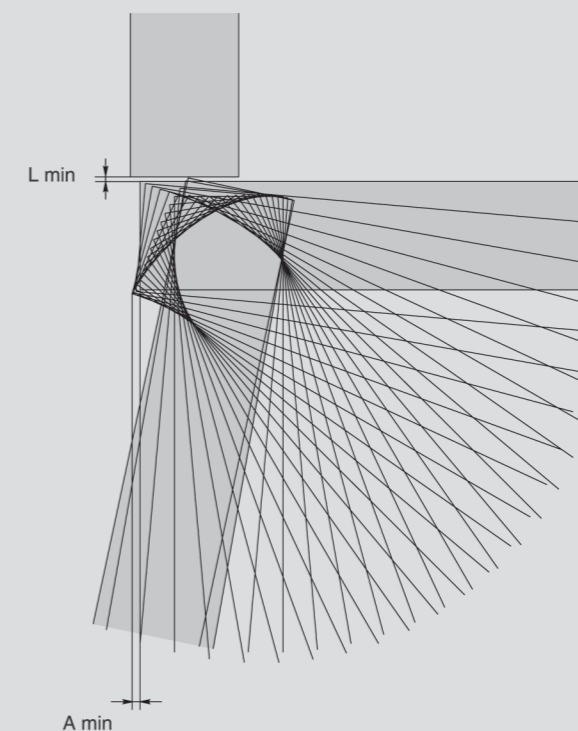


- |                                   |   |
|-----------------------------------|---|
| S = Thickness of the cabinet side | L = Gap between internal face of door and internal cabinet elements (e.g. shelves, drawers, etc.) |
| T = Door thickness                | H = Height of the mounting plate  |
| K = Drilling distance             | G = Hinge constant  |
| A = Reveal                        |   |

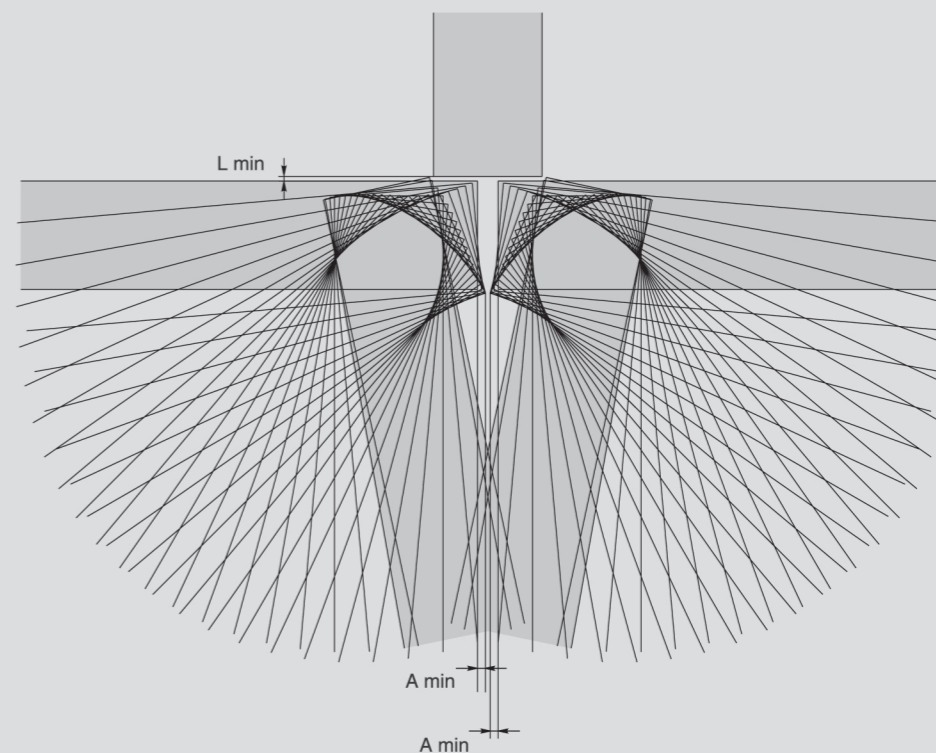
Whatever door overlay is required, you can select from our range the combination of both the type of hinge arm and the thickness of mounting plate necessary to solve your construction problem and avoid the need to stock too many different components.

### PLANNING

#### Simulation of the opening movement of a 110° hinge with full overlay door



#### Simulation of the opening movement of a 110° hinge with half overlay door





# ASSEMBLY AND ADJUSTMENT

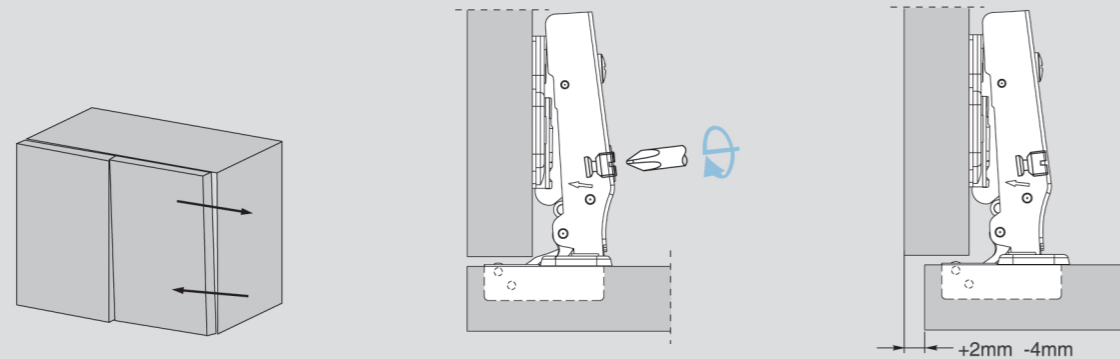
## PIVOT-PRO Hinges Installation and Parameters



### PLANNING

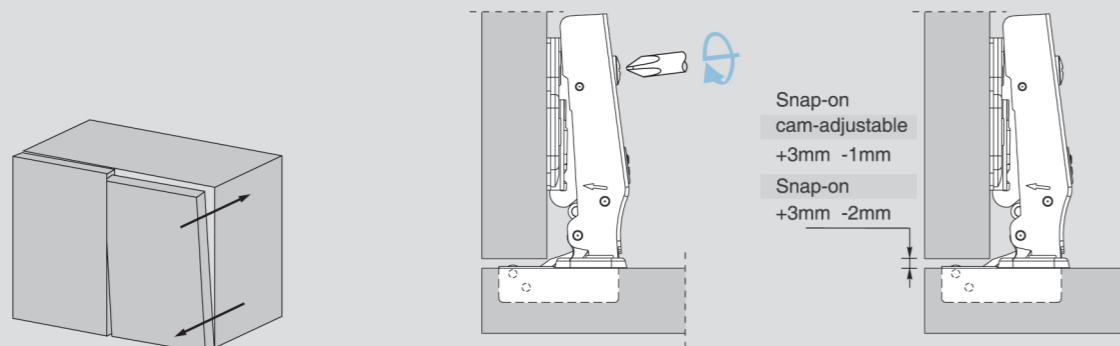
#### PIVOT-PRO side adjustment

Side adjustment of the door is made by using the indicated screw.



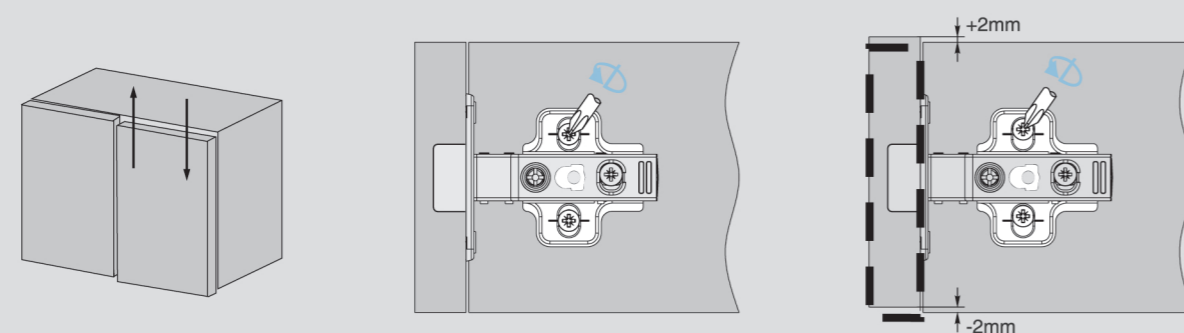
#### PIVOT-PRO depth adjustment

Depth adjustment is made without loosening any screw. The door can be moved in or out by rotating the cam adjuster on the hinge arm.

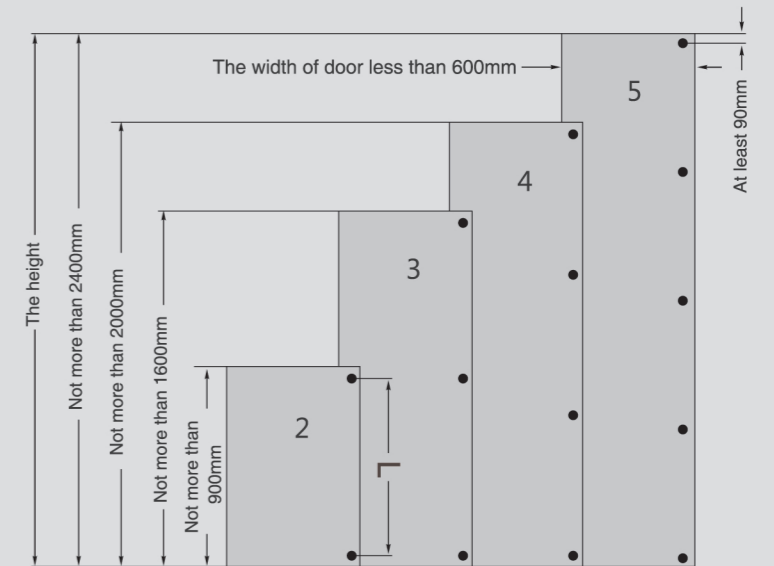
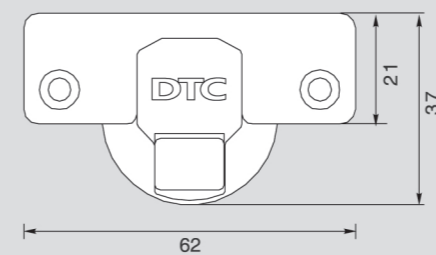


#### PIVOT-PRO height adjustment

By loosening the two fixing screws to allow the mounting plate to slide up or down, the door can be adjusted vertically by  $\pm 2$ mm. After retightening the screws, the depth adjustment is done.



### PLANNING



L=distance between hinges

#### Number of hinges needed for each door

The number of hinges needed for each door depends on the width of the door, the height of the door and the type of material the door is made of. It varies in particular practices. The hinge installation proposal listed above is only for your reference. Experiment is suggested in an uncertain situation. "L" volume shall be relatively large considering stability.

#### Adjustment

Side adjustment: 4mm~+2mm  
Height adjustment:  $\pm 2$ mm  
Depth adjustment: Snap-on -2mm~+3mm, Snap-on (Cam adjustable) -1mm~+3mm

#### Mounting plates

Two-hole and four-hole mounting plates  
Up&down cam adjustable mounting plates