

UNDERMOUNT
SLIDE SERIES

D-MOTION PLUS

D-MOTION PLUS

A Strong Undermount Slide with Many Benefits
**Robust Components Ensure
Smooth and Silent Running
Action**



- 7/8 extension provides a full access experience.
- Undermount slides with silent, soft, and effortless closing.
- Quick release locking device or pin-mount connection options meet application requirements.
- The redesigned cabinet member increases stability over a lifetime of use.



Quietness




Intelligence



Durability



Eco-Friendliness



D-MOTION PLUS makes drawers of any size more stable and comfortable to operate. Locking pins safely secure the drawer box to the slides.

DTC
Durable Quality Technology

UNDERMOUNT
SLIDE SERIES
D-MOTION PLUS



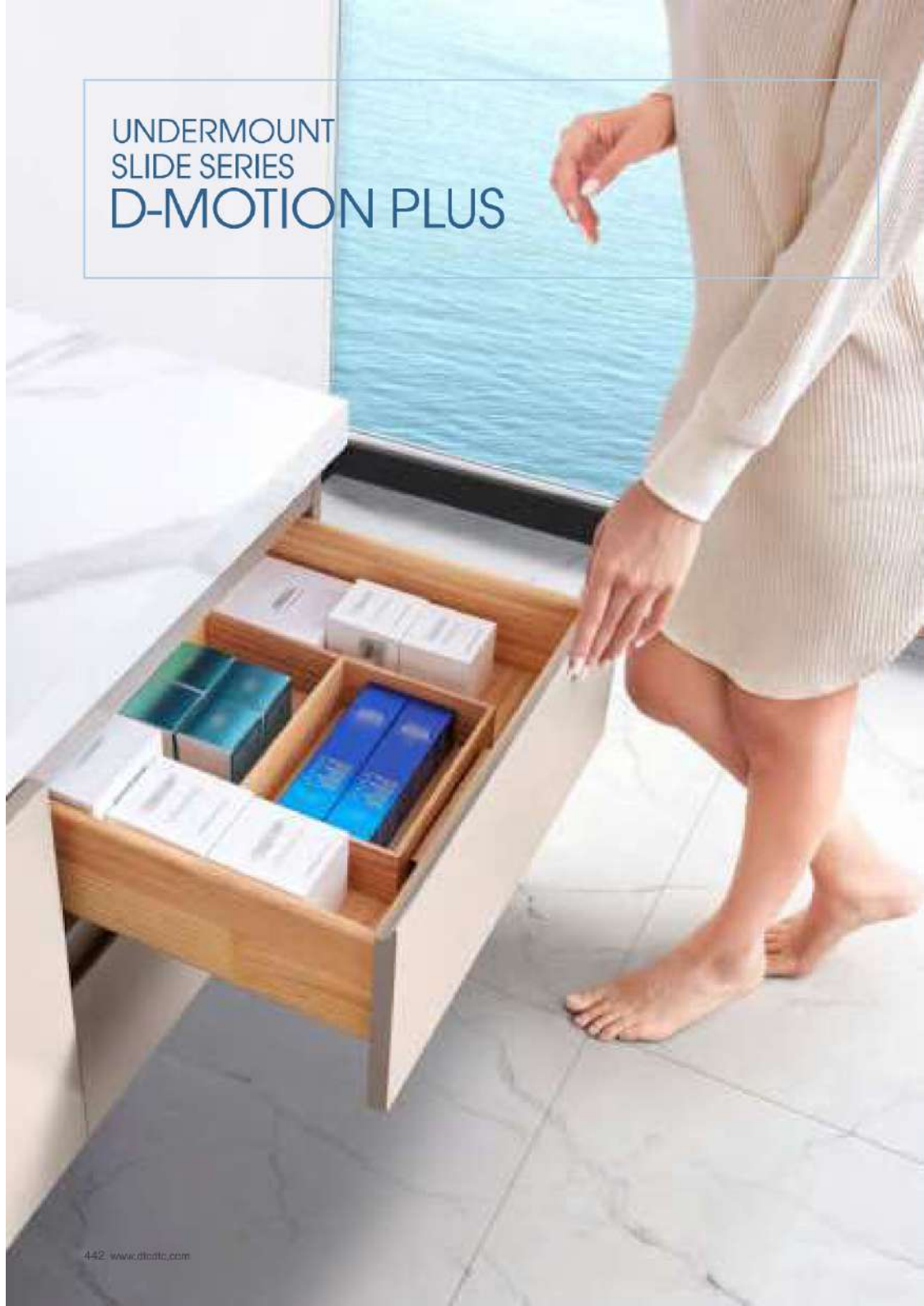
The innovative structure of the undermount slide produces a minimal opening force for a comfortable experience. D-MOTION PLUS is widely used in bedrooms, bathrooms and other living spaces in the home.



D-MOTION PLUS improves the end user's access over drawers having only partial extension slides. It provides a full range of solutions for high-quality wood furniture throughout the home.

DTC
dividual quality techniques

UNDERMOUNT
SLIDE SERIES
D-MOTION PLUS



D-MOTION PLUS, with 7/8 extension, enables full access to everything stored in a drawer.



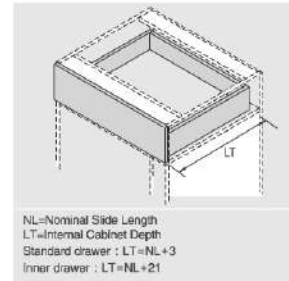
PRODUCT



DESCRIPTION

- Load capacity: 25kg
- Finish: zinc plated
- Length: 250-600mm
- 2/3 extension
- Drawer up&down adjustment: 0~+4mm
- Tool free assembly and removal of drawer
- Silent system guarantees smooth run without noise
- Maximum drawer side thickness: 18mm

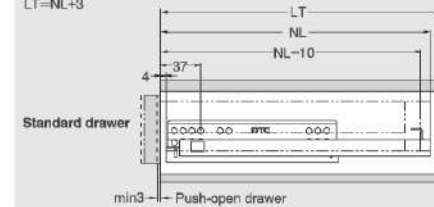
SPACE REQUIREMENT



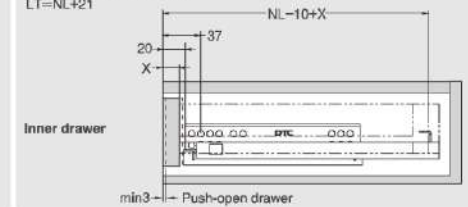
PLANNING

Installation Dimensions(mm)

NL=Nominal Slide Length
LT=Internal Cabinet Depth
LT=NL+3



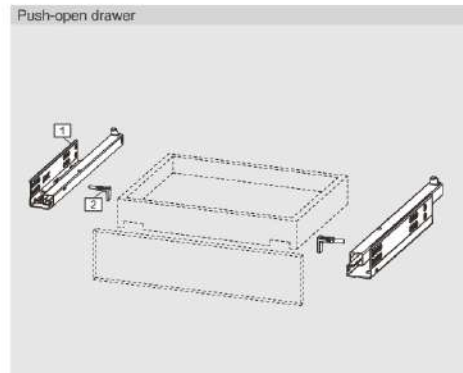
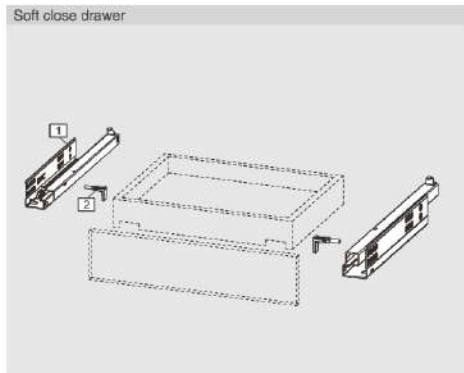
NL=Nominal Slide Length
LT=Internal Cabinet Depth
LT=NL+21



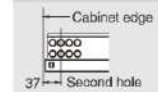
SOFT CLOSE DRAWER/PUSH-OPEN DRAWER

1		Slides (left/right)	
Pre-zinc Steel (F02)			
NL	Soft close Item No.	Push-open Item No.	Set/ctn
250mm	GG10250H	GG10250G	10
270mm	GG10270H	GG10270G	10
300mm	GG10300H	GG10300G	10
350mm	GG10350H	GG10350G	10
400mm	GG10400H	GG10400G	10
450mm	GG10450H	GG10450G	10
500mm	GG10500H	GG10500G	10
550mm	GG10550H	GG10550G	10
600mm	GG10600H	GG10600G	10

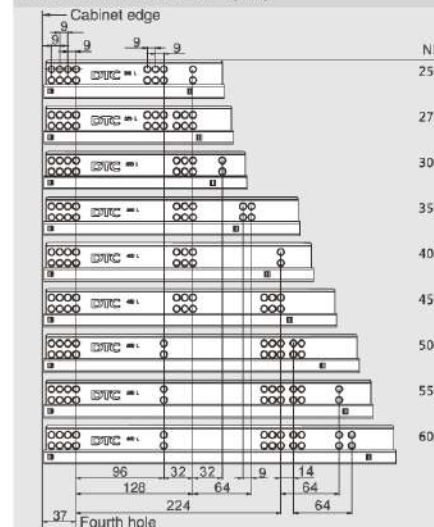
2		Locking Pin	
Grey(H11)			
Item No.	GJ502		



Fixing Hole Position for Inner Drawer(mm)

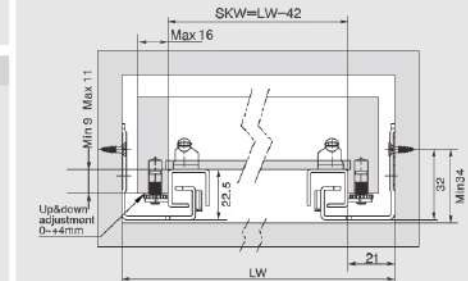


Screw Positions of the Slides(mm)

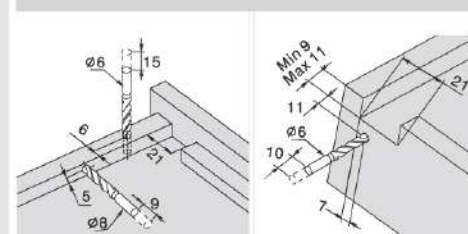


Installation Dimensions(mm)

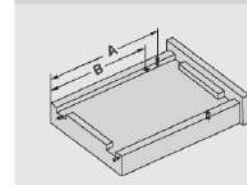
LW=Internal Cabinet Width



Drawer Preparation(mm)

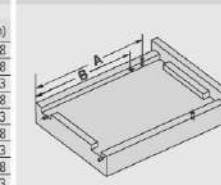


Soft close drawer



NL (mm)	A (mm)	B (mm)
250	220	188
270	230	198
300	245	213
350	270	238
400	305	273
450	330	298
500	355	323
550	390	358
600	415	383

Push-open drawer



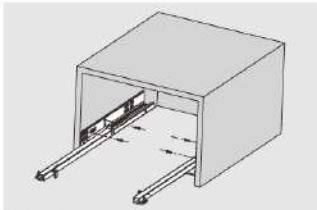
NL (mm)	A (mm)	B (mm)
250	221	189
270	241	209
300	271	239
350	321	289
400	371	339
450	421	389
500	471	439
550	521	489
600	571	539

ASSEMBLY AND ADJUSTMENT

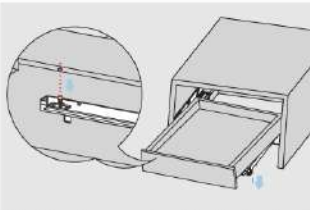
Assembly and Adjustment
(for D-MOTION PLUS Partial Extension Undermount Slides)



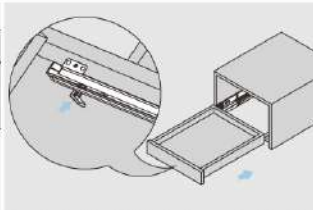
Drawer Assembly with Peg



Fix the slide onto the cabinet.

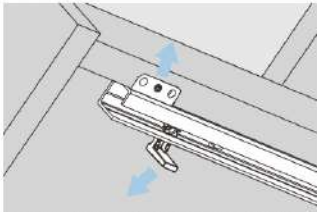


Pull out the drawer member of the slide from the cabinet, lay the drawer onto the slide.

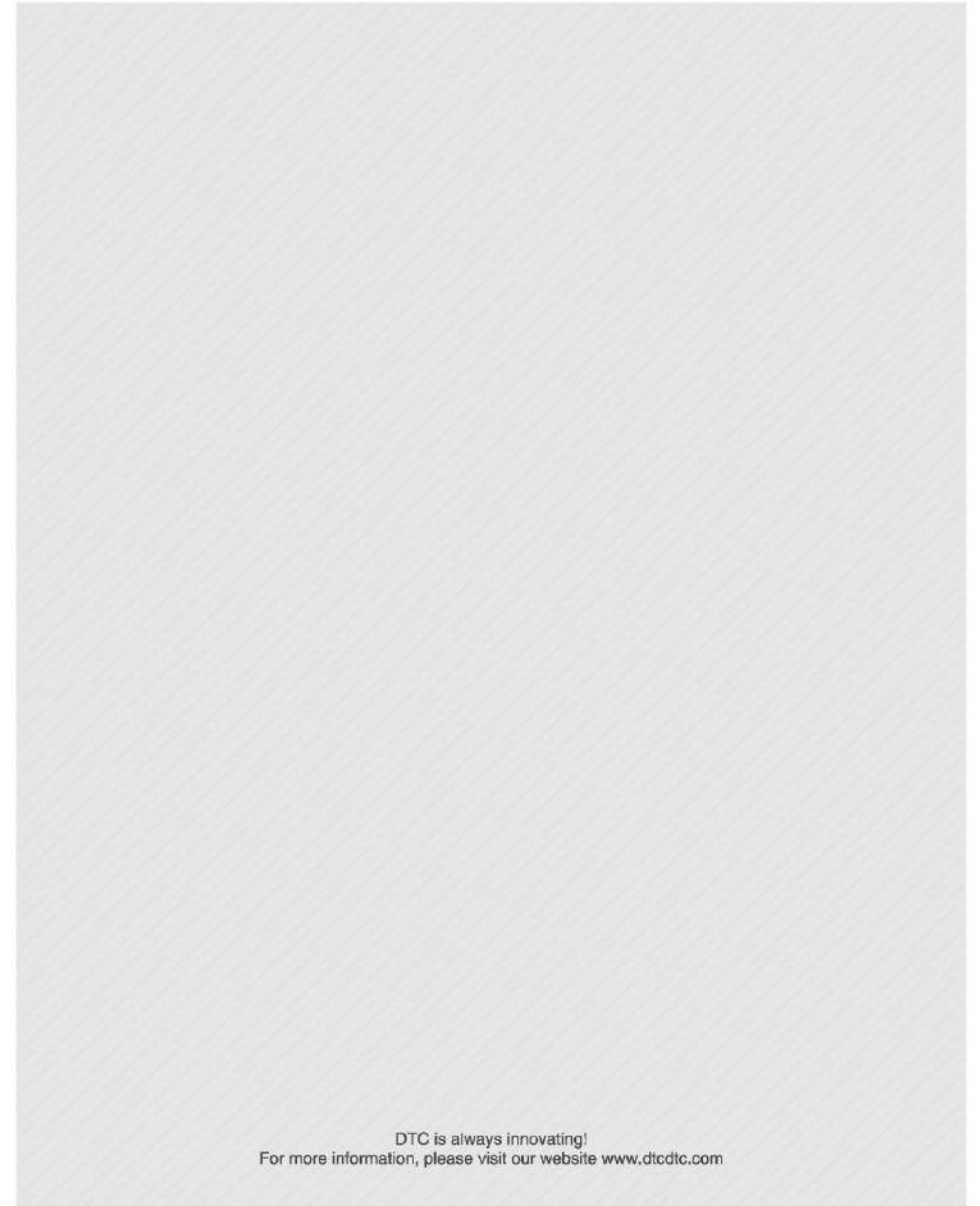
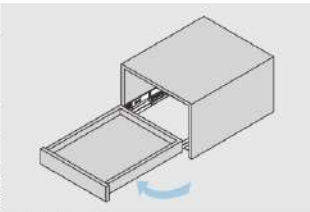


Press the locking pin into the drawer side to lock the position of the drawer.

Removal with Peg



For removal, pull out the locking pin from the drawer side. Lift the drawer and pull it out from the cabinet.



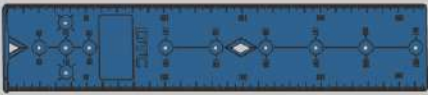
DTC is always innovating!
For more information, please visit our website www.dtc.dtc.com

ACCESSORY

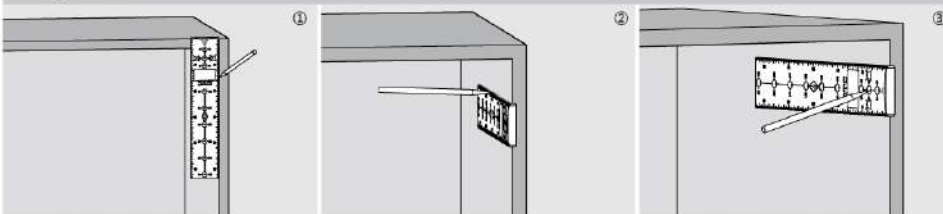
Marking Template (for Drawer Slide System)



Order Information

		Universal Marking Template
Item No.	DT02	
Pcs/ctn	100	

Marking Position

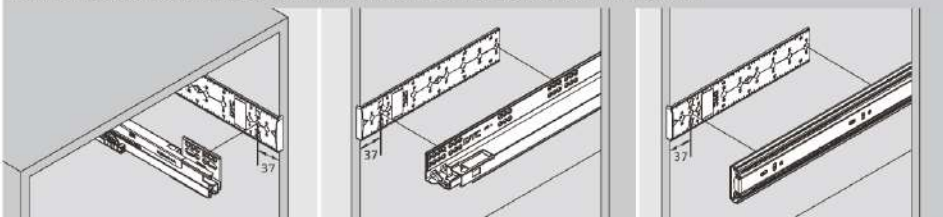


①② Mark the vertical position of mounting hole

③ Mark the longitudinal position of mounting hole

Application

Drawer Slide System: Double-wall Drawer System / Undermount Slide Series / Ball Bearing Slide Series

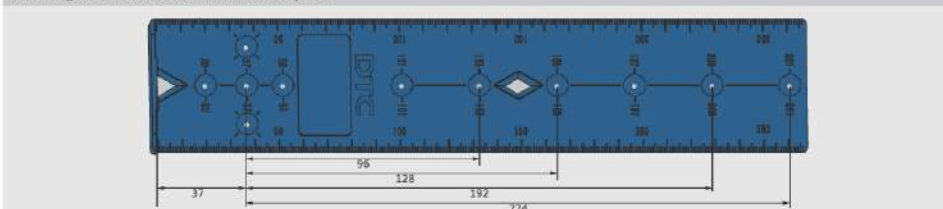


Double-wall Drawer System

Undermount Slide Series

Ball Bearing Slide Series

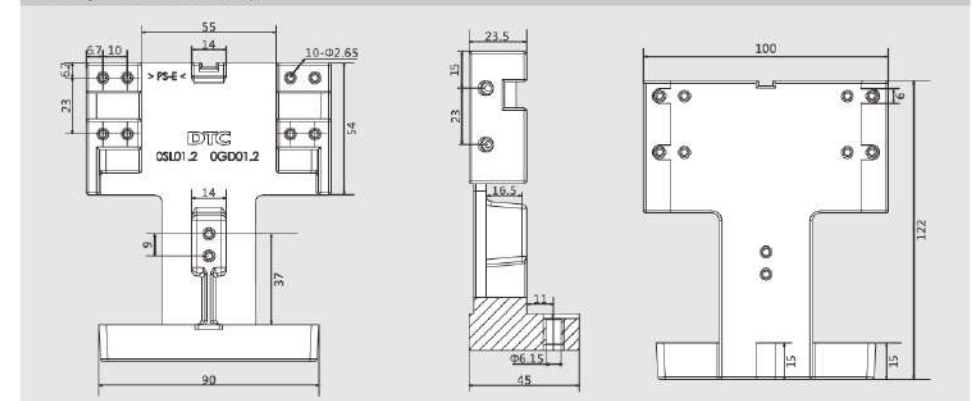
Mounting Hole Positions for Drawer Slide System



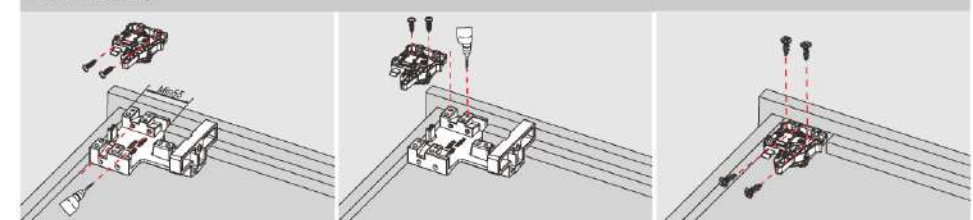
Order Information

		Undermount Slide Drawer Assembly Tool
Item No.	DT01	
Pcs/ctn	20	

Assembly Tool Dimensions (mm)

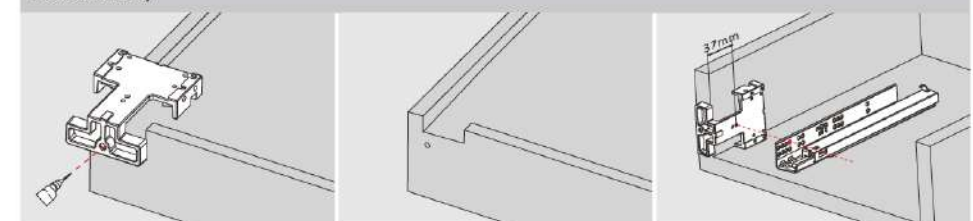


Drawer Assembly



Mark the position of the locking device and fix the locking device onto the drawer bottom

Drawer Assembly



Drill a hole (Ø6, depth 10mm)

mark the position of the fourth hole for standard drawer