

PRODUCT



DESCRIPTION

- Opening angle: 105°
- Cabinet width up to 1800mm
- Cabinet height: 240-600mm
- Cabinet minimum depth: 125mm
- Door thickness: 16-26mm
- Easy to open and stays at any desired position
- Silent and smooth closing
- Side, height and depth adjustment
- Tool free assembly and removal

Power factor LF=

Cabinet height KH(mm) x door weight incl. double handle weight(kg)

Note: A practical trial is suggested when the power factor of lift mechanism is close to the critical value.

ORDER INFORMATION

1 Lift Mechanism set/ Industrial Package Nickel Plated(A01)

Power Factor LF	Dynamic	Item No.	Set/cdn
200-1000	Light	SE00AL	20
500-1500	Medium	SE00AM	20
960-2350	Strong	SE00AH	20

The power factor can be double when a second lift mechanism is used.

2 Front Fixing-brackets/ Industrial Package for wooden door and wide Alu frame door Nickel Plated(A01)

Item No.	Pcs/cdn
SE00YQ	200

2 Front Fixing-brackets/Industrial Package for wooden door, wide Alu frame door and narrow frame door Nickel Plated(A01)

Item No.	Pcs/cdn
SE00CQ	200

2 Front Fixing-brackets set/Industrial Package for narrow alu frame door Nickel Plated(A01)

Item No.	Set/cdn
SE00H	200

4 pcs Ø3.5X8.5mm countersunk screws included

3 Mounting plate/Industrial Package Nickel Plated(A01)

Item No.	Pcs/cdn
SE00TQ	200

Caps/Industrial Package White(H29) ! Grey(H30) ! Nickel Plated(A01)

	Item No.	Set/cdn
Left	SEJ502L	200
Right	SEJ502R	200

4 Soft-close hinge for wooden door and wide Alu frame door/ Industrial Package Nickel Plated(A01)

Item No.	Pcs/cdn
C80A676F	200

2 hinges are required when the cabinet width is over 900mm or the power factor is over 1800
4 hinges are required when the cabinet width is over 1200mm or the power factor is over 2700

Alternative PIVOT-STAR speed-adjustable hinge C81A676F. Door thickness: 16-26mm.

4 Soft-close hinge for narrow Alu frame door / Industrial Package Nickel Plated(A01)

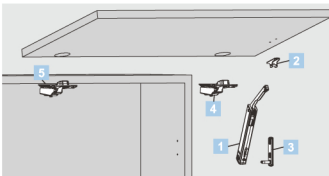
Item No.	Pcs/cdn
C80A678F	200

2 hinges are required when the cabinet width is over 900mm or the power factor is over 1800
4 hinges are required when the cabinet width is over 1200mm or the power factor is over 2700
Range of width of aluminium frame(V):19-22mm.

5 Adjustable mounting plate/Industrial Package Nickel Plated(A01)

Item No.	Pcs/cdn
89T00TQ	200

Use mounting plate 81T00TQ for PIVOT-STAR speed adjustable hinge C81A676F



ORDER INFORMATION

T1 Recommended Kit Package

Including:

1 X Lift Mechanism	1 X Front Fixing-bracket	1 X Mounting plate	4 X Ø4X16mm wood screws

Please select the corresponding kit package item No. according to power factor and cabinet height!

Power Factor(LF)	Cabinet Height	Kit package Item No.
200-1000	240-600mm	SE00AL01
500-1500		SE00AM01
960-2350		SE00AH01

Spring holder colours represent different powers

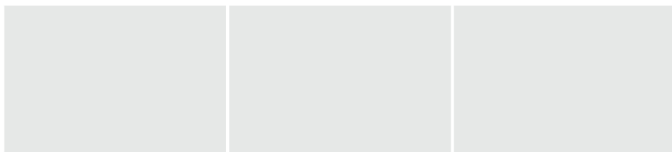
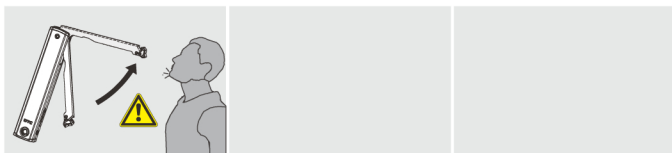
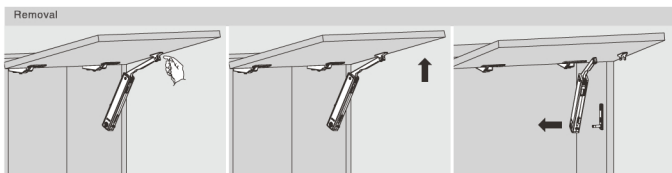
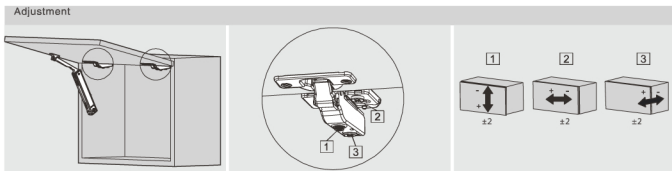
Light grey
Dark grey
White



! Front fixing bracket SE00H should be ordered when the front is narrow Alu frame door.

TOP-STAYS

Assembly, Removal and Adjustment (for SE Series Lifting System)

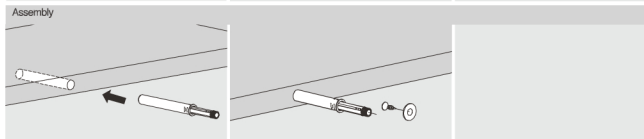
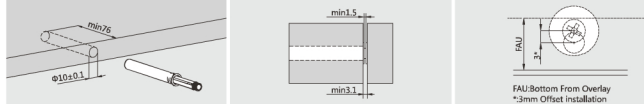


TOP-STAYS

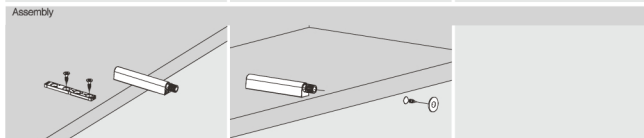
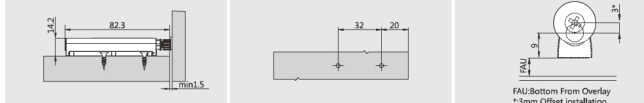
Assembly (for SE Series Push-open Lifting System)

PLANNING

Insert-type Magnetic Push Latch Installation Dimensions(mm)



Magnetic Push Latch with Inline Fixing Plate(mm)



Magnetic Push Latch with Cross Fixing Plate(mm)

