

LIFTING  
SYSTEM

ST Series  
TOP-STAYS



# TOP-STAYS

The new experience of the lift-up door

## Agile and Unconstrained, Impressive and Elegant



- Easy to open and stays at any desired position, silent and smooth closing, full access to the inside of the cabinet
- Side, height and depth adjustments - 3D front adjustment of both fronts
- Tool free assembly and removal, easy and fast installation



Quietness



Intelligence



Durability



Eco-Friendliness

### PRODUCT



### DESCRIPTION

- Cabinet width up to 1800mm
- Cabinet height:480-1040mm
- Door thickness:16-26mm
- 3D front adjustment of both fronts
- Easy to open, and stays at any desired position
- Adjustable soft-closing speed
- Adjustable opening and hovering forces
- Tool free assembly and removal



- symmetrical door
- wooden doors and wide alu frames

### ORDER INFORMATION

1	Lift Mechanism set/ Industrial Package 8 Set/ctn	Item No.
Cabinet height KH(mm)	Door weight incl handle weight (kg)	
480-529	5.0-10.0(2.5-5.0 to use 1 lift)	<b>ST01AL</b>
	9.6-16.0	<b>ST01AM</b>
530-589	4.5-8.9(2.3-4.5 to use 1 lift)	<b>ST02AL</b>
	8.7-14.4	<b>ST02AM</b>
590-649	4.1-8.1 (2.0-4.1 to use 1 lift)	<b>ST03AL</b>
	7.8-13.0	<b>ST03AM</b>
650-729	3.7-7.2 (1.8-3.7 to use 1 lift)	<b>ST04AL</b>
	7.0-11.6	<b>ST04AM</b>
	11.5-19.8	<b>ST04AH</b>
	3.2-6.5	<b>ST05AL</b>
730-799	6.3-10.6	<b>ST05AM</b>
	10.5-18.1(15.7-27.1 to use 3 lift)	<b>ST05AH</b>
800-879	5.8-9.6	<b>ST06AM</b>
	9.5-16.5(14.2-24.7 to use 3 lift)	<b>ST06AH</b>
880-959	5.2-8.8	<b>ST07AM</b>
	8.7-15.1(13.0-22.6 to use 3 lift)	<b>ST07AH</b>
960-1040	4.8-8.1	<b>ST08AM</b>
	8.0-13.9(12.0-20.8 to use 3 lift)	<b>ST08AH</b>

6	Centre hinge /Industrial Package Nickel Plated(A01)	Item No.	Set/ctn
		<b>ST008G</b>	100

7	Mounting plate for centre hinge/Industrial Package Nickel Plated(A01)	Item No.	Set/ctn
		<b>T00TQ</b>	100

8	Front Mounting plate /Industrial Package Nickel Plated(A01)	Item No.	Set/ctn
		<b>ST00YQ</b>	200

2	120° hinge/Industrial Package Nickel Plated(A01)	Item No.	Set/ctn
		<b>STA685</b>	100

3	Mounting plate for 120° hinge/Industrial Package Nickel Plated(A01)	Item No.	Set/ctn
		<b>SQ00YQ</b>	200

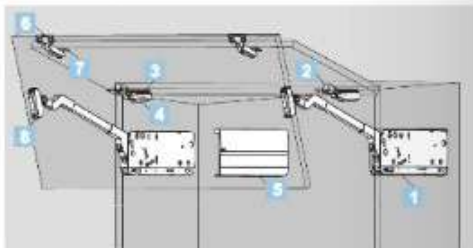
4	Decoration cover for hinge arm /Industrial Package Nickel Plated(A01)	Item No.	Set/ctn
		<b>S15H</b>	1000

5	Cover cap set/Industrial Package plastic	Item No.	Set/ctn
	White	<b>STJS02A</b>	20
	Gray	<b>STJS02B</b>	20

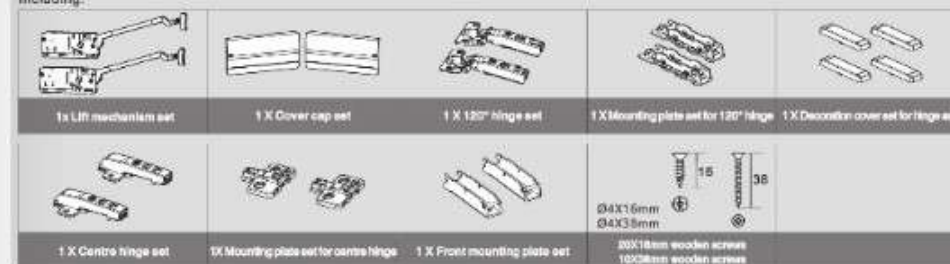
9	Opening angle restriction clip/Industrial Package Plastic	Item No.	Pos/ctn
	Dark gray (H11)		
100°	Opening angle	<b>STW100</b>	1000
83°		<b>STW83</b>	1000



### ORDER INFORMATION

#### T1 Recommended Kit Package

Including:



Please select the corresponding kit package item No. according to cabinet height, door weight and handle weight

Cabinet height KH(mm)	Door weight incl handle weight (kg)	Kit package item No. (White cap)	Kit package item No. (Grey cap)
480-529	5.0-10.0	<b>ST01AL02A</b>	<b>ST01AL02B</b>
	9.6-16.0	<b>ST01AM02A</b>	<b>ST01AM02B</b>
530-589	4.5-8.9	<b>ST02AL02A</b>	<b>ST02AL02B</b>
	8.7-14.4	<b>ST02AM02A</b>	<b>ST02AM02B</b>
590-649	4.1-8.1	<b>ST03AL02A</b>	<b>ST03AL02B</b>
	7.8-13.0	<b>ST03AM02A</b>	<b>ST03AM02B</b>
650-729	3.7-7.2	<b>ST04AL02A</b>	<b>ST04AL02B</b>
	7.0-11.6	<b>ST04AM02A</b>	<b>ST04AM02B</b>
	11.5-19.8	<b>ST04AH02A</b>	<b>ST04AH02B</b>
	3.2-6.5	<b>ST05AL02A</b>	<b>ST05AL02B</b>
730-799	6.3-10.6	<b>ST05AM02A</b>	<b>ST05AM02B</b>
	10.5-18.1	<b>ST05AH02A</b>	<b>ST05AH02B</b>
800-879	5.8-9.6	<b>ST06AM02A</b>	<b>ST06AM02B</b>
	9.5-16.5	<b>ST06AH02A</b>	<b>ST06AH02B</b>
880-959	5.2-8.8	<b>ST07AM02A</b>	<b>ST07AM02B</b>
	8.7-15.1	<b>ST07AH02A</b>	<b>ST07AH02B</b>
960-1040	4.8-8.1	<b>ST08AM02A</b>	<b>ST08AM02B</b>
	8.0-13.9	<b>ST08AH02A</b>	<b>ST08AH02B</b>

# TOP-STAYS

## ST Series Bi-fold Lifting System

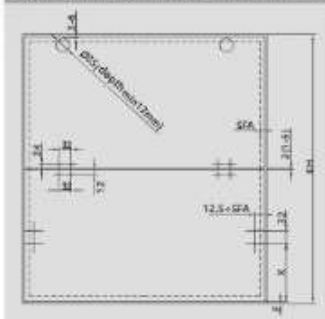
### PLANNING

#### Installation Dimensions(mm)-Symmetrical doors

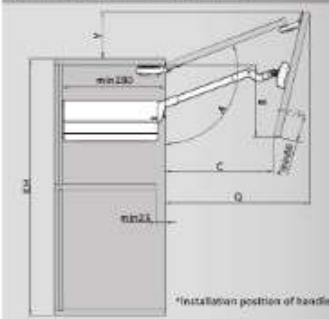
##### Page position and space requirement



##### Door assembly-wooden doors and wide aluminium frames



##### Cornica / crown moulding clearance



\*Installation position of handle

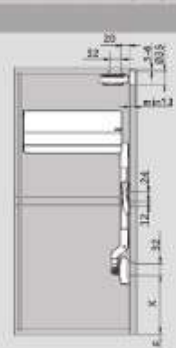
Cabinet height KH(mm)	H(mm)
480-589	KHx0.3-28
590-1040	KHx0.3-57

E. G.  
Cabinet height KH=500  
H=500x0.3-28=122  
Cabinet height KH=800  
H=800x0.3-57=183

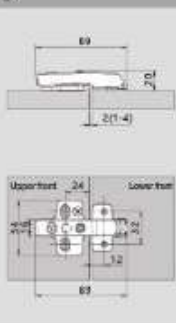
Cabinet height KH(mm)	X(mm)		E. G.				
	KH-H-S-F		Cabinet height KH=600 H=600x0.3-57=123 S=356 (see table below) Gap F=2 X=600-123-356-2=119				
Cabinet height KH(mm)	S(mm)	A(°)	B(mm)	C(mm)	Q(mm)	Y(mm)	
480-529	301	~115-105	109-156	257-210	278-323	109-76	
530-569	328	~115-105	123-180	280-223	300-354	121-77	
590-649	356	~115-105	141-194	308-224	327-384	132-84	
650-729	388	~115-102	180-228	335-228	355-428	144-74	
730-799	428	~115-105	181-250	372-293	380-450	162-108	
800-879	461	~115-105	202-280	404-318	422-494	176-115	
880-959	501	~115-105	225-301	440-361	458-529	194-134	
960-1040	541	~115-105	245-335	476-405	493-566	214-148	

SFA=Door overlay on the side panel  
F=Gap

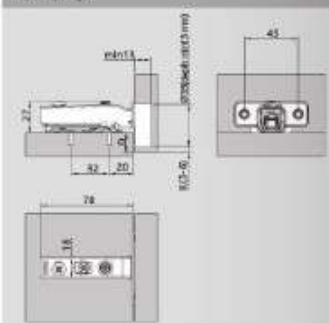
#### Installation Dimensions(mm)



##### Centre hinge



##### 120° Hinge



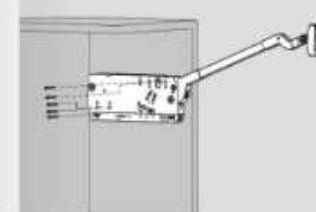
Number of hinges needed for each door:  
Use 3 hinge for cabinet width over 1200mm and door weight over 12kg.  
Use 4 hinge for cabinet width over 1800mm and door weight over 20kg.

Drilling distance K(mm)	3	4	5	6
Door overlay D(mm)	15	16	17	18

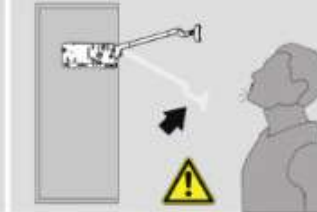
# TOP-STAYS

## Assembly, Removal and Adjustment(for ST series Bi-fold Lifting System)

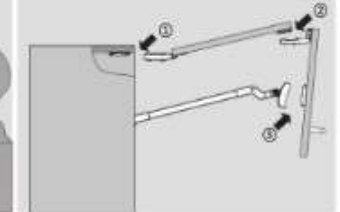
### Assembly



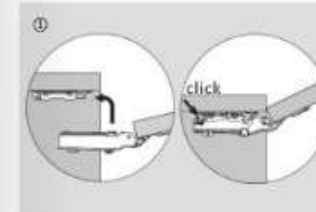
Assembly



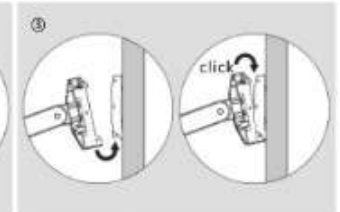
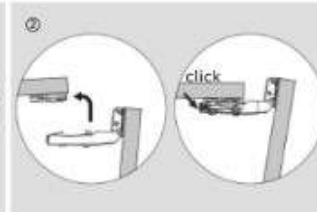
The arm of this device could spring up and cause injury. Do not push the arm down without door attached.



Door Assembly



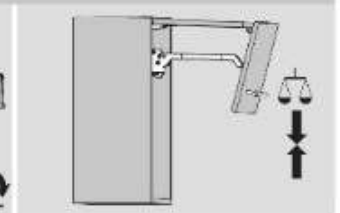
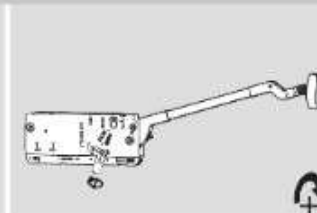
Door Assembly



### Hovering Adjustment

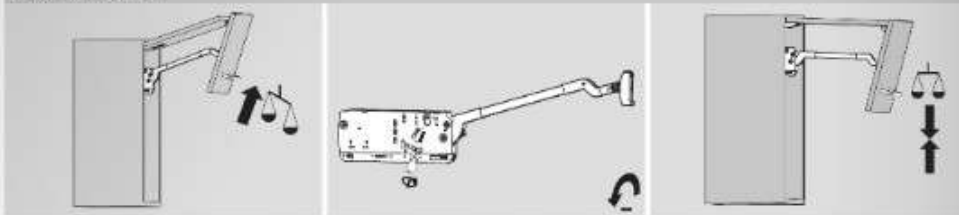


Adjustment



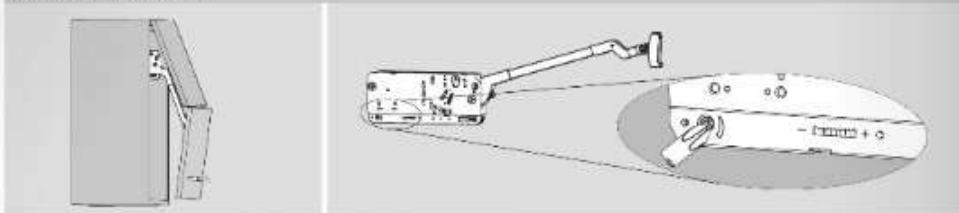


### Hovering Adjustment



Adjustment

### Closing Speed Adjustment



“+” Increasing soft-closing time (turn adjustment screw counter-clockwise)  
 “-” Reducing soft-closing time (turn adjustment screw clockwise)

### Upper front adjustment



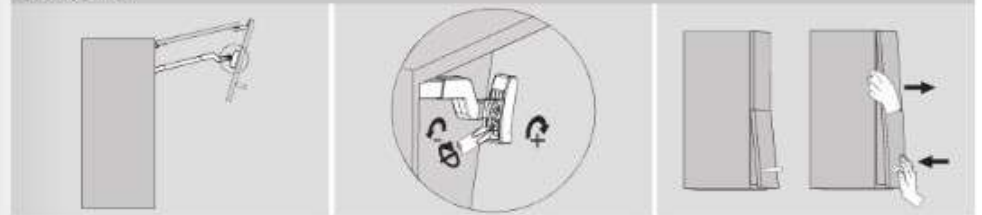
120° hinge

### Lower front adjustment



Center hinge

### Door Assembly

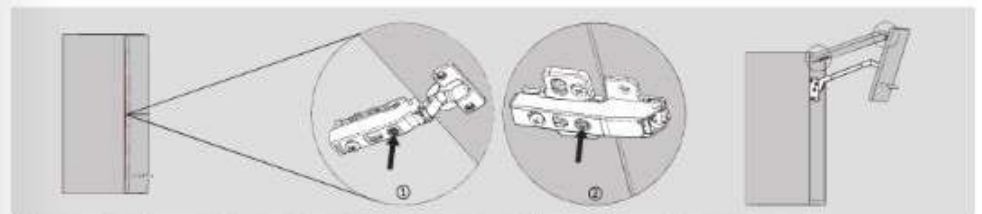


“+” Loosen the screw properly when the automatic positioning is too tight to move during door adjustment  
 “-” Tighten the screw properly when the automatic positioning is too loose and doesn't work during door adjustment



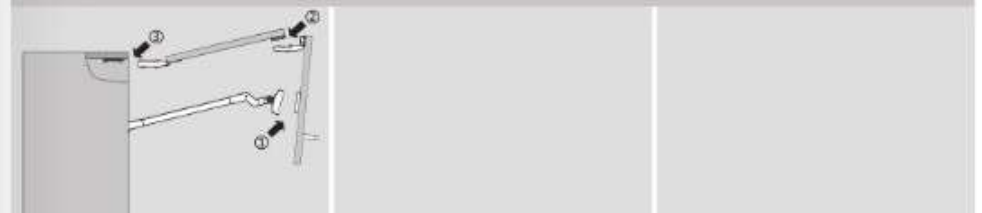
Adjust positions of the doors

Lock screw



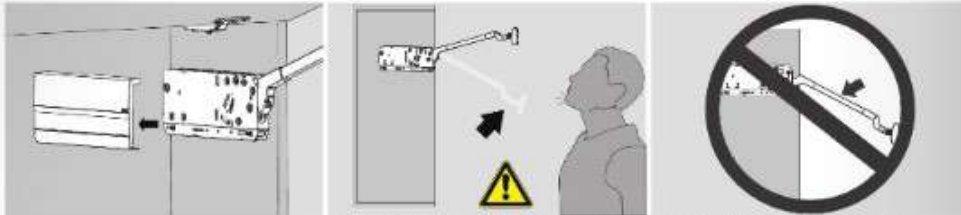
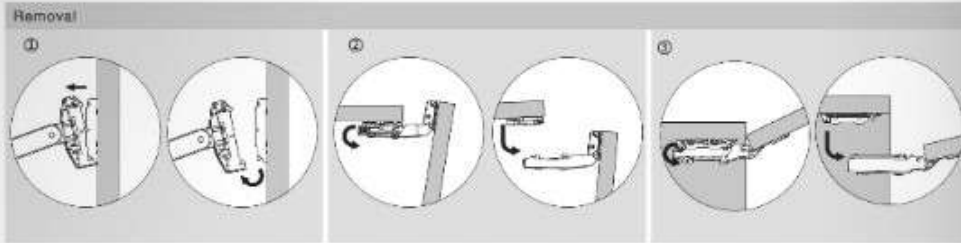
If there is small gap between the doors and the cabinet side; fine-tune the positions of the doors with the adjustment screws

### Removal



# TOP-STAYS

Assembly, Removal and Adjustment (for ST series Bi-fold Lifting System)



The arm of this device could spring up and cause injury!

Do not push the arm down without door attached



Assembly



DTC is always innovating!  
For more information, please visit our website [www.dctdct.com](http://www.dctdct.com)