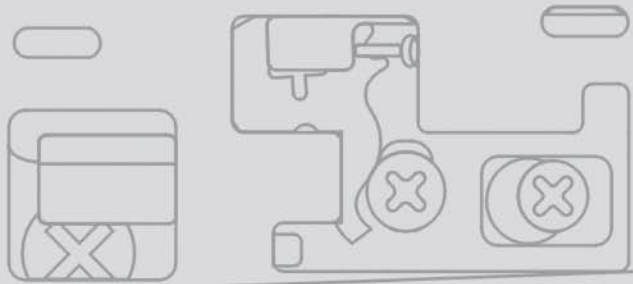


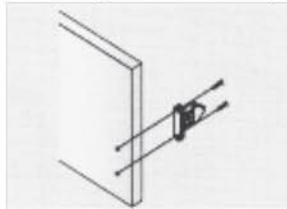
Super soft closing drawer system

# Installation Manual

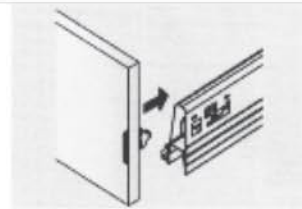
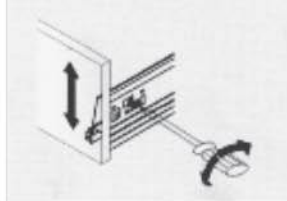


# TRS

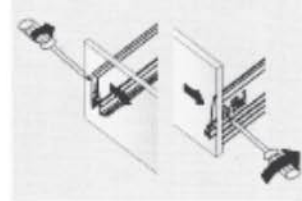
## Front fixing brackets mounting



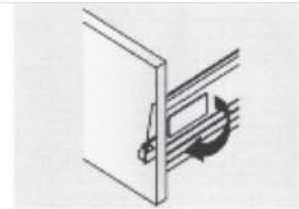
Front panel height adjustment:  $\pm 3\text{mm}$



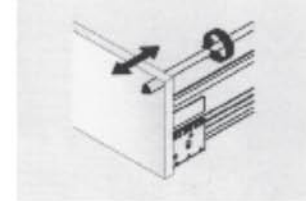
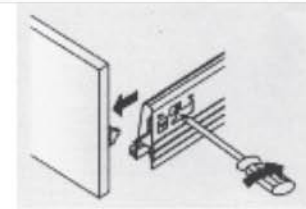
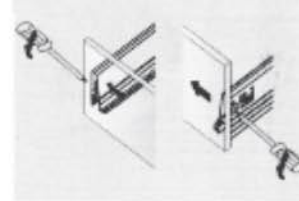
Front panel side adjustment:right  $\pm 3\text{mm}$



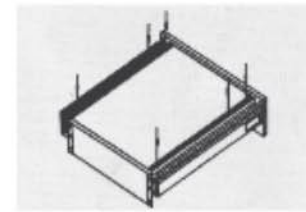
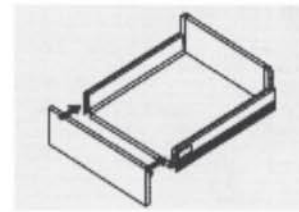
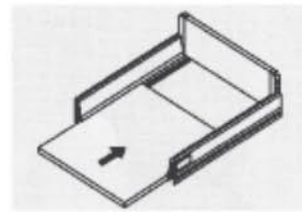
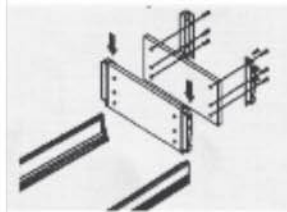
## Front panel removal



Front panel side adjustment:left  $\pm 3\text{mm}$



## Drawer mounting



## Installation Illustration



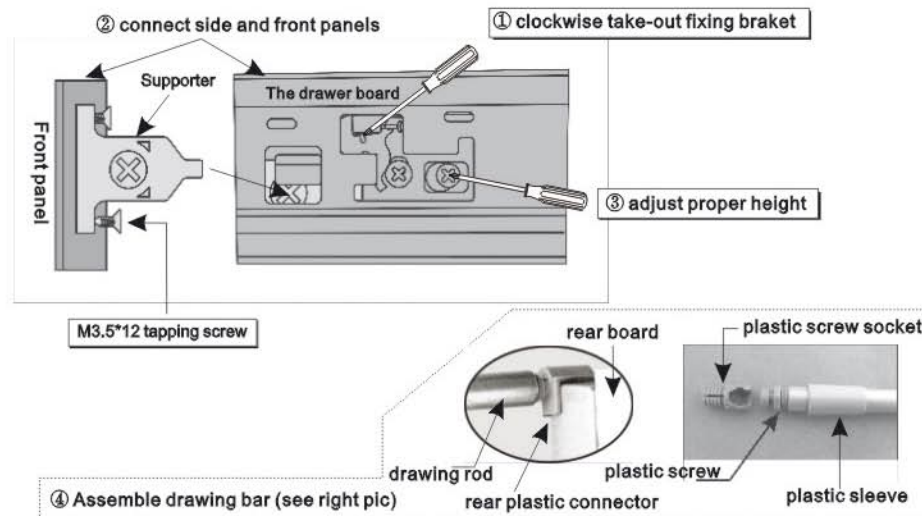
### \* Front panel assembly

Take out front fixing bracket and fix to inner front panel side with two M3.5\*12 self tapping screws

### \* Front panel disassembly

Turn Philip's screw clockwise to release front fixing bracket, unscrew the bracket from the panel

## Installation Steps



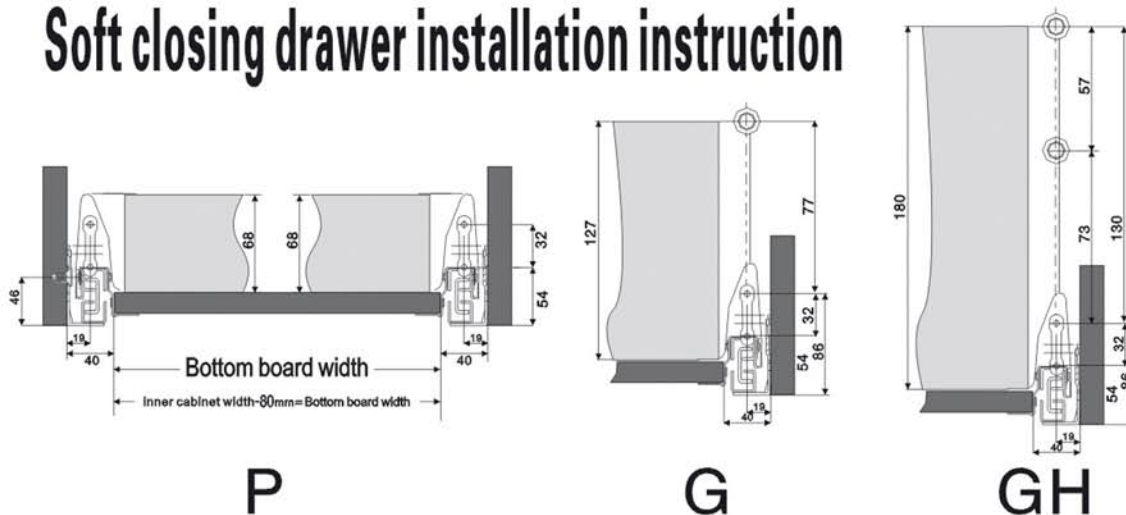
Super soft closing drawer system

## Installation Manual



# TRS

## Soft closing drawer installation instruction



### The size of materials

Rear board size=Rear board width(Cabinet width-90mm)\*Rear board (P=68mm/G=127mm/H=180mm)\*16mm

Bottom board size=Bottom board width(Cabinet width-80mm)\* Bottom board length(Size) -8mm\*16mm

#### Installation Illustration



#### \* Simple and precise adjustment on front panel

Tune plastic philip's screw in front fixing bracket for ±3mm left/right movement on front panel

#### \* Efficient and swift drawer put-in & take-out

When drawer put-in, box on glides and move backward for self block; Lift box upward for drawer take-out.

### Demonstration of the type(mm) Slide installation size of hole(mm)

Type	Size	Min Cabinet Length	Drawer Height
P300	300mm	320mm	83mm
P350	350mm	370mm	83mm
P400	400mm	420mm	83mm
P450	450mm	470mm	83mm
P500	500mm	520mm	83mm
P550	550mm	570mm	142mm
G300	300mm	320mm	142mm
G350	350mm	370mm	142mm
G400	400mm	420mm	142mm
G450	450mm	470mm	142mm
G500	500mm	520mm	142mm
G550	550mm	570mm	142mm

#### Drawer Box Components

Drawer side panel - 1 pair  
Steel rear connector - 1 pair  
Plastic trademark covers - 2 pcs  
Steel glides - 1 pair

#### Attachments

Installation Manual  
Quality Certification

