

Silent Drawer System

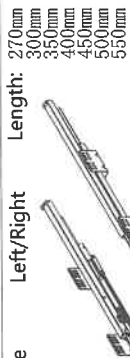
Modul Box Assembly Instruction

Special Features:

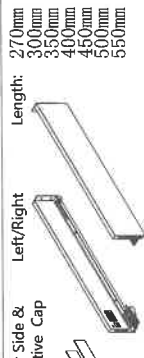
- Length: 270, 300, 350, 400, 450, 500, 550mm.
- The drawer side-board is 90mm high.
- Drawer width can be designed freely with automatic error adjustment.
- Hidden full pullout silencing sliding skid can bear 30kg and enjoys
- excellent stability and quite and smooth sliding performance.
- Quick installation and dismantle.
- Newly-designed built-in damper is free from reinstallation and ensures soft and smooth drawer movements.

Basic length	Internally usable drawer depth	Minimum installation depth of drawer	Minimum installation height
270mm	244mm	270mm	122mm
300mm	274mm	300mm	122mm
350mm	324mm	350mm	122mm
400mm	374mm	400mm	122mm
450mm	424mm	450mm	122mm
500mm	474mm	500mm	122mm
550mm	524mm	550mm	122mm

1. Guide



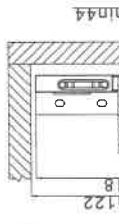
2. Drawer Side & Decorative Cap



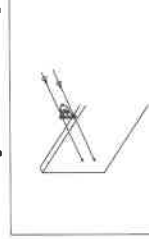
3. Front connector



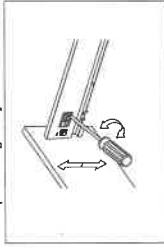
Inside Cabinet Dimension



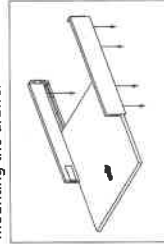
Front fixing brackets mounting



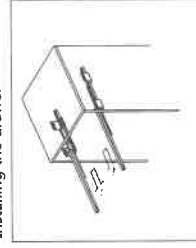
Front panel height adjustment : ±2mm



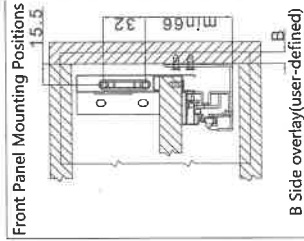
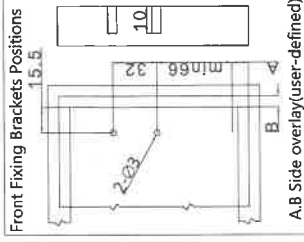
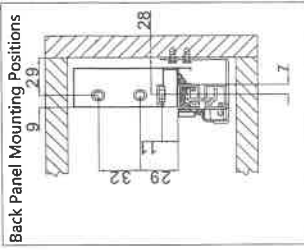
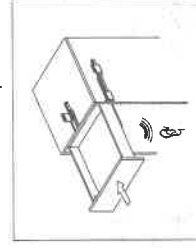
Mounting the drawer



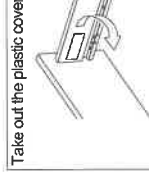
Installing the drawer



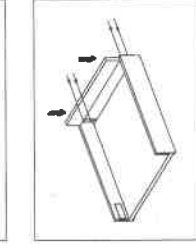
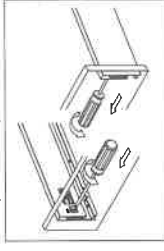
Function of the damper



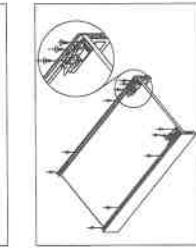
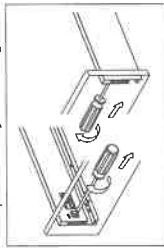
Front panel removing



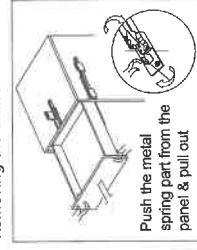
Front panel side adjustment : left/mm



Front panel side adjustment : right/mm

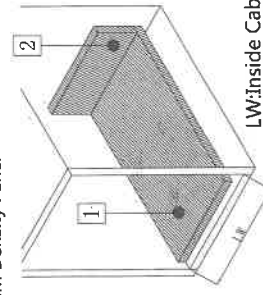


Removing the drawer



Push the metal spring part from the panel & pull out

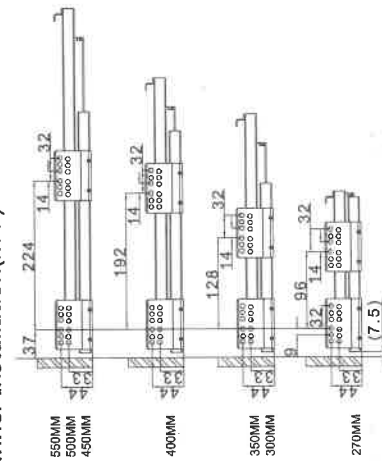
Technology pivot: Bottom and Back Panel Measurement 16MM Density Panel



LW: Inside Cabinet Width

- 1 Bottom panel width=Inside Cabinet Width-19±0.5
Bottom panel length=Runner length-20MM
- 2 Back panel height= 63MM
Back panel width=Inside Cabinet Width-4±0.5

Runner Installation(mm)



Basic length: 270/300/350/400/450/500/550