

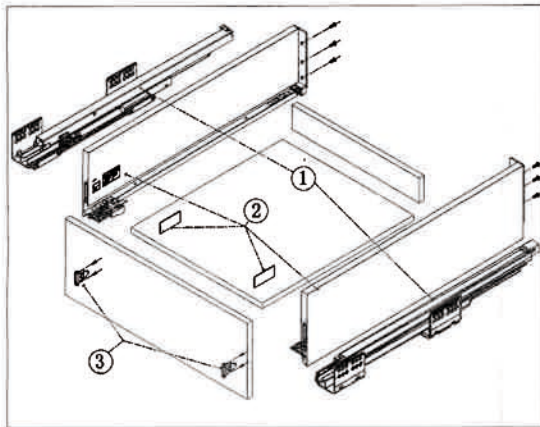
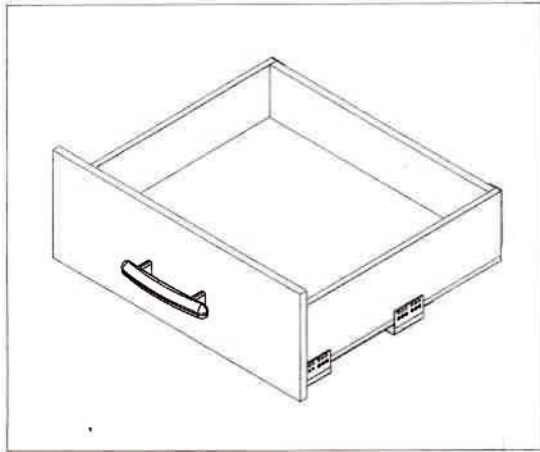
Silent Drawer System

Modul Box Assembly Instruction

Special Features:

- Length: 270, 300, 350, 400, 450, 500, 550mm.
- The drawer side-board is 128mm high.
- Drawer width can be designed freely with automatic error adjustment.
- Hidden full pullout silencing sliding skid can bear 30kg and enjoys
- excellent stability and quite and smooth sliding performance.
- Quick installation and dismantle.
- Newly-designed built-in damper is free from reinstallation and ensures soft and smooth drawer movements.

| Basic length | Internally usable drawer depth | Minimum installation depth of drawer | Minimum installation height |
|--------------|--------------------------------|--------------------------------------|-----------------------------|
| 270mm | 244mm | 270mm | 161mm |
| 300mm | 274mm | 300mm | 161mm |
| 350mm | 324mm | 350mm | 161mm |
| 400mm | 374mm | 400mm | 161mm |
| 450mm | 424mm | 450mm | 161mm |
| 500mm | 474mm | 500mm | 161mm |
| 550mm | 524mm | 550mm | 161mm |

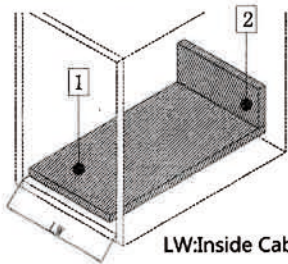


1. Guide Left/Right Length: 270mm, 300mm, 350mm, 400mm, 450mm, 500mm, 550mm

2. Drawer Side & Decorative Cap Left/Right Length: 270mm, 300mm, 350mm, 400mm, 450mm, 500mm, 550mm

3. Front connector Left / Right

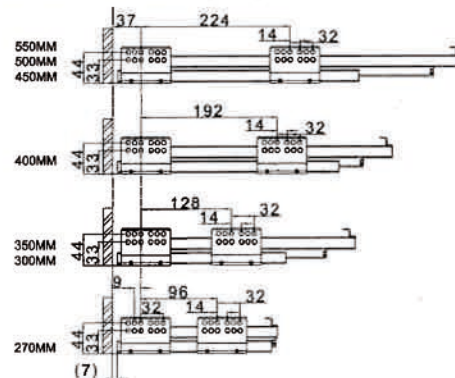
Technology pivot Bottom and Back Panel Measurement 16MM Density Panel



LW: Inside Cabinet Width

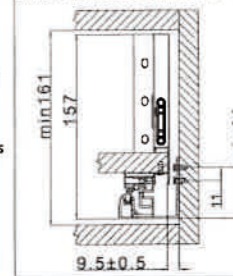
- Bottom panel width = Inside Cabinet Width - 19 ± 0.5
Bottom panel length = Runner length - 20MM
- Back panel height = 101MM
Back panel width = Inside Cabinet Width - 42 ± 0.5

Runner Installation(mm)

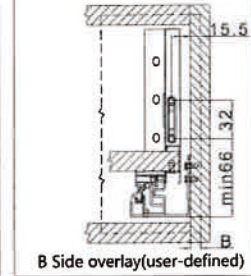


Basic length: 270/300/350/400/450/500/550

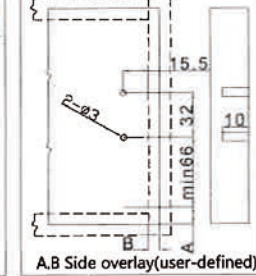
Inside Cabinet Dimension



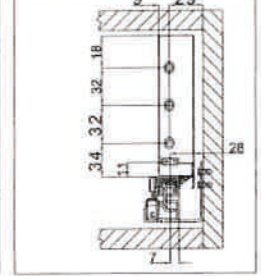
Front Panel Mounting Positions



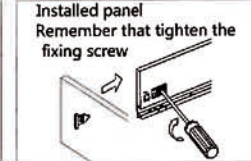
Front Fixing Brackets Positions



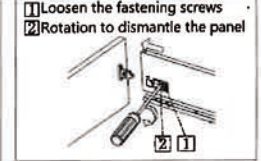
Back Panel Mounting Positions



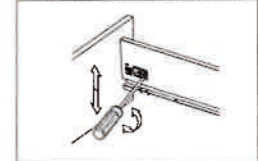
Front fixing brackets mounting



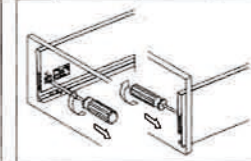
Front panel removing



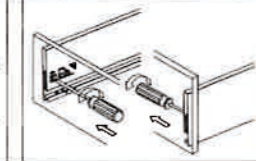
Front panel height adjustment : ±2mm



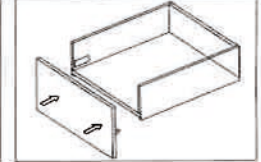
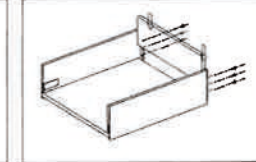
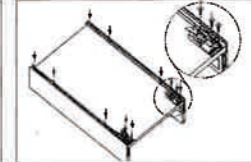
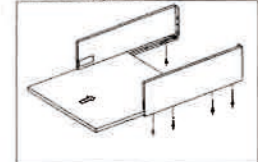
Front panel side adjustment : right 1mm



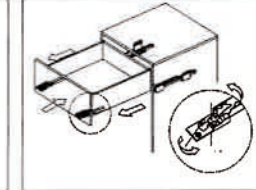
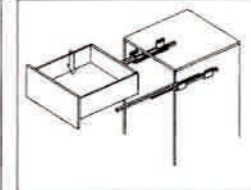
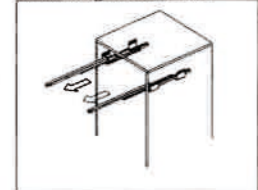
Front panel side adjustment : left 1mm



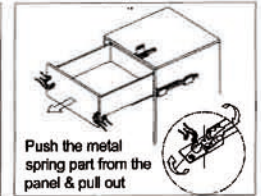
Mounting the drawer



Installing the drawer



Removing the drawer



Function of the damper

