

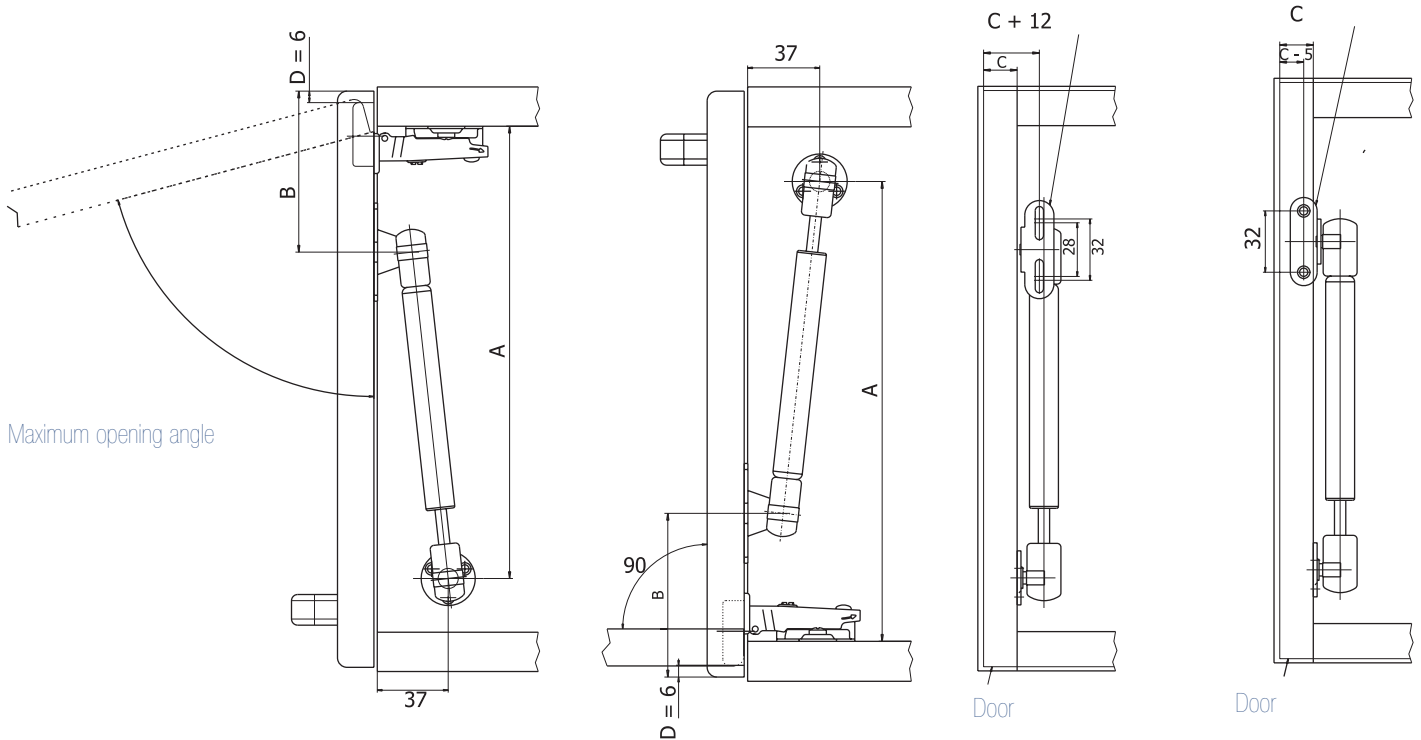
Akrobat



The gas lift

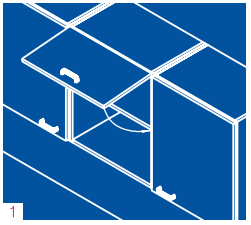
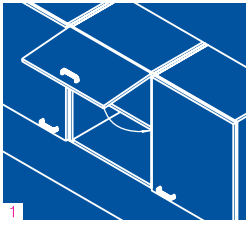
- Universal mechanism with special “clip-on” adaptor plates
- Available for wood and/or aluminium doors
- Available with “stay open” and “stay close” features
- Effortless opening of doors and lids
- Secure holding in open and closed positions
- Smooth motion and stopping
- Available with several “recall” forces
- Easy to mount/install
- Compact and attractive design
- Maintenance free
- Metal gray finish

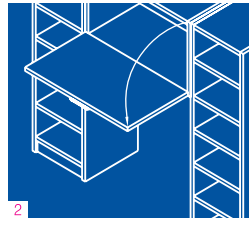
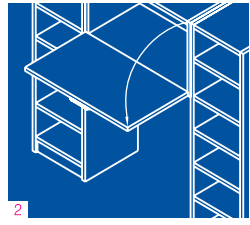
Universal adaptor plate for wooden doors 28/32



Akrobat

Maximum opening angle

Lift-up applications				
	L	Maximum opening angle	A	B
	243	75°	257.5	84
	243	90°	236	84
	243	105°	221	76
	276	75°	291	100
	276	90°	265	100
	276	105°	252	84

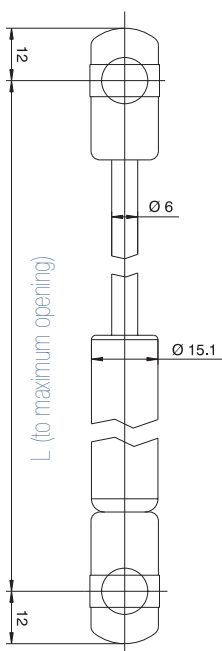
Drop-down applications				
	L	Maximum opening angle	A	B
	243	90°	236	84

Akrobat gas Lift Technical Sheet

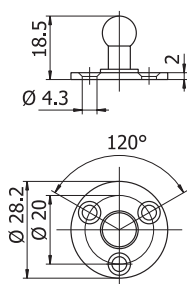
Number and type of lifts

Door Wgt	Door hgt	mm 300			mm 350			mm 400			mm 450			mm 500			mm 550			mm 600			mm 650			mm 700			
		Lift force (N)	60	80	100	60	80	100	60	80	100	60	80	100	60	80	100	60	80	100	60	80	100	60	80	100	60	80	100
Kg 2	75°																												
	90°	1	x	x	1	x	x	1	x	x	1	x	x	1	x	x	1	x	x	2	x	x	2	1	x	2	x	x	
	100°	1	x	x	1	x	x	1	x	x	1	x	x	1	x	x	2	1	x	2	1	x	2	1	x	2	2	1	
Kg 3	75°																												
	90°	1	x	x	1	x	x	2	x	x	2	1	x	2	2	x	2	2	1	2	2	2	2	2	2	x	2	2	
	100°	1	x	x	2	x	x	2	1	x	2	2	x	2	2	1	2	2	2	x	2	2	x	2	2	2	x	2	2
Kg 4	75°																												
	90°	2	x	x	2	1	x	2	2	1	2	2	1	x	2	2	x	2	2	x	2	2	x	2	2	x	x	2	
	100°	2	1	x	2	2	1	2	2	1	x	2	2	x	2	2	x	2	2	x	x	2	x	x	2	x	x	2	
Kg 5	75°																												
	90°	2	1	x	2	2	1	x	2	2	x	2	2	x	2	2	x	2	2	x	x	2	x	x	2				
	100°	2	2	1	x	2	2	x	2	2	x	2	2	x	x	2	x	x	2	x	x	x							
Kg 6	75°																												
	90°	2	2	1	x	2	2	x	2	2	x	x	2	x	x	2													
	100°	x	2	1	x	2	2	x	x	2	x	x	2	x	x	x													
Kg 7	75°																												
	90°	x	2	2	x	2	2	x	x	2	x	x	2																
	100°	x	2	2	x	x	2	x	x	2	x	x	x																
Kg 8	75°																												
	90°	x	2	2	x	x	2																						
	100°	x	x	2	x	x	2																						
Kg 9	75°																												
	90°	x	2	2	x	x	2																						
	100°	x	x	2																									

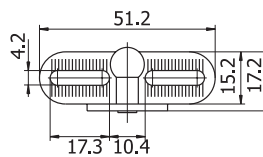
This chart is intended merely as a general guidance. It is based on approximations and therefore in some cases it may not be coherent with real cases. "x" means that the lift is not suitable.



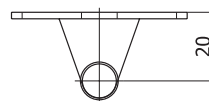
Lift-up applications		
L	Force (N)	Kit code (containing :gas lift, cabinet plate, door plate for wooden and aluminium door, 7 screws)
243	60	PGA243C060AK001
243	80	PGA243C080AK002
243	100	PGA243C100AK003
276	60	PGA276C060AK004
276	80	PGA276C060AK005
276	100	PGA276C060AK006
Drop-down applications		
243	40	PGC243C060AK007



Universal cabinet adaptor plate for surface mounting



Universal cabinet adaptor plate for wooden doors



Universal cabinet adaptor plate for aluminium doors

